

AVS4YOU Programs Help



AVS Disc Creator

www.avs4you.com

© Online Media Technologies, Ltd., UK. 2004 - 2010. All rights reserved

Contact Us

If you have any comments, suggestions or questions regarding **AVS4YOU** programs or if you have a new feature that you feel can be added to improve our product, please feel free to contact us.

When you register your product, you may be entitled to technical support.

General information:	info@avs4you.com
Technical support:	support@avs4you.com
Sales:	sales@avs4you.com
Help and other documentation:	help@avs4you.com

Technical Support

AVS4YOU programs do not require any professional knowledge. If you experience any problem or have a question, please refer to the **AVS4YOU Programs Help**. If you cannot find the solution, please contact our support staff.

 **Note:** only registered users receive technical support.

AVS4YOU staff provides several forms of automated customer support:

- **AVS4YOU Support System**

You can use the **Support Form** on our site to ask your questions.

- **E-mail Support**

You can also submit your technical questions and problems via e-mail to support@avs4you.com.

 **Note:** for more effective and quick resolving of the difficulties we will need the following information:

- Name and e-mail address used for registration
- System parameters (CPU, hard drive space available, etc.)
- Operating System
- The information about the capture, video or audio devices, disc drives connected to your computer (manufacturer and model)
- Detailed step by step describing of your action

Please do **NOT** attach any other files to your e-mail message unless specifically requested by AVS4YOU.com support staff.

Resources

Documentation for your AVS4YOU software is available in a variety of formats:

In-product (.chm-file) and Online Help

To reduce the size of the downloaded software installation files the in-product help was excluded from the installation although you can always download it from our web-site for your convenience. Please, visit AVS4YOU web-site at <http://www.avs4you.com/OnlineHelp/index.aspx> to download the latest available version of the help executable, run it and install into the AVS4YOU programs folder. After that you will be able to use it through the **Help** menu of the installed AVS4YOU software.

Online Help include all the content from the In-product help file and updates and links to additional instructional content available on the web. You can find the **Online Help** at our web-site - <http://www.avs4you.com/OnlineHelp/index.aspx>. Please note, that the most complete and up-to-date version of AVS4YOU programs help is always on the web.

PDF Documentation

The offline help is also available as a pdf-file that is optimized for printing. All PDF help files are available for download at the programs pages at AVS4YOU web-site (both <http://www.avs4you.com/index.aspx> and <http://www.avs4you.com/OnlineHelp/index.aspx>). To be able to read and print AVS4YOU PDF help files you will need to have a PDF reading program installed.

User Guides

You have access to a wide variety of resources that help you make the most of your AVS4YOU software. The step-by-step user guides will be of help not only to the novice users but also to the users that face a certain task to be performed and look for a way to do it. Please, visit our **User Guides** section of AVS4YOU web-site at <http://www.avs4you.com/Guides/index.aspx> to read the detailed instructions for various software and tasks

Technical Support

Visit the **AVS4YOU Support** web-site at <http://support.avs4you.com> to ask your questions concerning AVS4YOU software installation, registration and use. Feel free to also use our e-mail address support@avs4you.com.

Downloads

Visit the **Downloads** section - <http://www.avs4you.com/downloads.aspx> - of our web-site to find free updates, tryouts, and other useful software. We constantly update the software, new versions of the most popular programs and new software are also frequently released.

Overview

AVS Disc Creator is a compact and fully functional application that lets you perform different burning tasks with any kind of files. The software has an easy-to-use and understandable interface that allows you to create your own audio, data and video discs effortlessly with just several mouse clicks.

Using AVS Disc Creator

you can quickly and easily perform the following tasks:

- burn home videos available on the HDD directly onto DVD and Blu-ray discs for home DVD/BD players;
- record data onto CD, DVD, Blu-ray discs;
- create audio CDs;
- copy CD, DVD and Blu-ray discs;
- restore a damaged disc with corrupted structure making a new copy of it;
- create, burn and edit disc images;
- create bootable discs;
- erase your discs before burning them;
- view information about your optical drive and disc types it supports.

AVS Disc Creator supports writing onto the following disc types: CD-R, CD-RW, CD-RW High Speed, DVD-R, DVD-RW, DVD+R DL, DVD-R DL, DVD-RAM, BD-R, BD-RE, BD DoubleLayer-R, BD DoubleLayer-RE. See the **Appendix** section for more detail on different disc types.

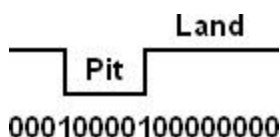
To start **AVS Disc Creator** go to **Start** menu and choose **All Programs -> AVS4YOU -> Burning -> AVS Disc Creator**.

Introduction into Disc Types

Depending on the data storage mechanism all discs can be divided into the following groups:

- **Magnetic** discs include aluminum discs (used for early radio recordings), floppy disks (devices using a flexible disc), hard disk drives (non-volatile magnetic data storage devices), gramophone records.
- **RAM** discs are volatile solid state drives.
- **Long-playing records**, or **vinyl** discs, are analog records, which served as a primary release format for recorded music, until the compact disc began to significantly displace them in the 1980s.
- **Optical** discs include CD, DVD, Blu-ray etc. The detailed description of these optical disc types you can find in the Appendix section.

Optical Disc Structure



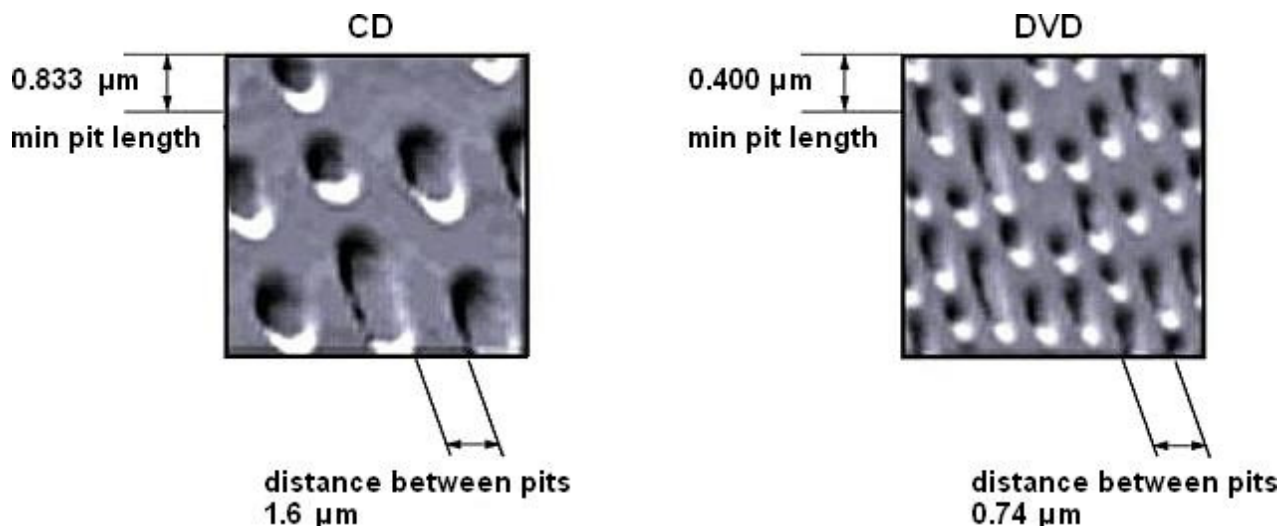
An **optical disc** is a flat, usually circular disc which encode binary data in the form of pits and lands on a special material on one of its flat surfaces. The lands represent "1" and the pits represent "0" in binary computing. The bits are read by the disc drive that uses a laser beam to distinguish between the lands and pits based on the amount of scattering or deflection that occurs when the beam of light hits the surface of the disc.

But it is not simply so that a land is a "1" data bit, and a pit is a "0" data bit. A data bit is a "1" or "0" from the original data, but on an optical disc there are no data-bits but channel-bits. A channel bit is the smallest time unit used on a disc, for a CD it equals 1/4,321,800 sec.

- a "1" channel bit is a time with change from land to pit, or from pit to land.
- a "0" channel bit is a time when there is no change.

In a pressed or mass-replicated CD or DVD, the bumps and grooves that represent the binary data on a disc's substrate are pressed into it during manufacture. CD/DVD-R discs do not have true pits and lands, but the unmelted, clear areas and melted, opaque places in the dye layer fulfill the same function as pits and lands on a pressed disc. To write data onto a disc, the optical drive uses this type of laser to make a series of microscopic marks in the dye. The resulting sequence of light and dark spots (pits and lands) represent the digital ones and zeros that comprise your data.

DVD uses 650 nm wavelength laser diode light as opposed to 780 nm for CD. This permits a smaller pit to be etched on the media surface compared to CDs (0.74 μm for DVD versus 1.6 μm for CD), allowing for a DVD's increased storage capacity. In comparison, Blu-ray disc, the successor to the DVD format, uses a wavelength of 405 nm, and one dual-layer disc has a 50 GB storage capacity.



Unlike the floppy disk, most optical discs do not have an integrated protective casing and are therefore susceptible to data transfer problems due to scratches, fingerprints, and other environmental problems. An optical disc is designed to support one of three recording types: read-only (e.g. CD and CD-ROM), recordable (write-once, e.g. CD-R), or re-recordable (rewritable, e.g. CD-RW).

Classification of Optical Discs

Optical discs can be classified by data type stored on them:

- **Data** discs can contain files of any type: document files (.txt, .html, .doc, .odt, etc.), audio files (.mp3, .wma, .wav, etc.), video files (.avi, .mov, .mpeg, etc.), image files (.png, .jpg, .gif, etc.) and so on.



Note: even if you create a disc containing only video files in such formats like .avi, .mp4 etc., it will be called a data disc. As many home DVD/BD players do not have the ability to play such video files, they are not considered to be video discs.

- **Video** discs contain both audio and video signals and have a specific folders structure. They store DVD or Blu-ray video of a special format supporting features such as menus, selectable subtitles, multiple camera angles and multiple audio tracks. Such discs can be played back in all home DVD/BD players.
- **Audio CD** discs are designed to be used in a consumer audio CD recorder, which use Serial Copy Management System (SCMS), an early form of Digital Rights Management (DRM). Audio tracks on such a disc have the .cda extension. Audio CD discs are formatted in tracks, and the track numbers, index points and CD time code are encoded into the lead-in of the audio CD disc, and these reference points are found throughout the audio CD sub-channel.
- **Bootable** discs are removable digital data storage media, from which a computer can load and run an operating system or utility program. Bootable disks are used for:
 - operating system installation,
 - data recovery,
 - data purging (removal of sensitive data from a system or storage device with the intent that the data can not be reconstructed by any known technique),

- hardware or software troubleshooting,
- customizing an operating environment,
- software demonstration,
- administrative access in case of lost password,
- games;
- etc.

Floppy disks and CD-ROMs are the most common forms of media used, but other media, such as magnetic or paper tape drives, zip drives, and more recently USB flash drives can be used. The computer's BIOS must support booting from a certain device.

A modern PC is configured to attempt to boot from various devices in a certain order. If your computer is not booting from the device you desire, such as the floppy drive, you may have to enter the BIOS setup function by pressing a special key when the computer is first turned on and then changing the boot order.

Optical Disc Images

A **disc image** is a single file containing the complete contents and structure representing a data storage medium, such as a CD/DVD /Blu-ray disc.

An optical disc image is usually created by making a complete sector-by-sector copy of the source medium and thereby perfectly replicating the structure and contents of a storage device. Disc images are mainly used for backup and disc cloning. The most common disc image format is **ISO**.

An **ISO image** is an archive file of an optical disc, composed of the data contents of every written sector of an optical disc, including the optical disc file system. ISO image files typically have a file extension of .iso. The data are stored in an uncompressed format, so it is a true digital copy of the original. These properties make ISO images an attractive alternative to physical media for the distribution of software, as it is simple to transfer over the Internet. The most important feature of an ISO image is that it can be easily rendered or burned to a CD, DVD or BD by using media authoring or disc burning software. It can also be opened using any file archiver.

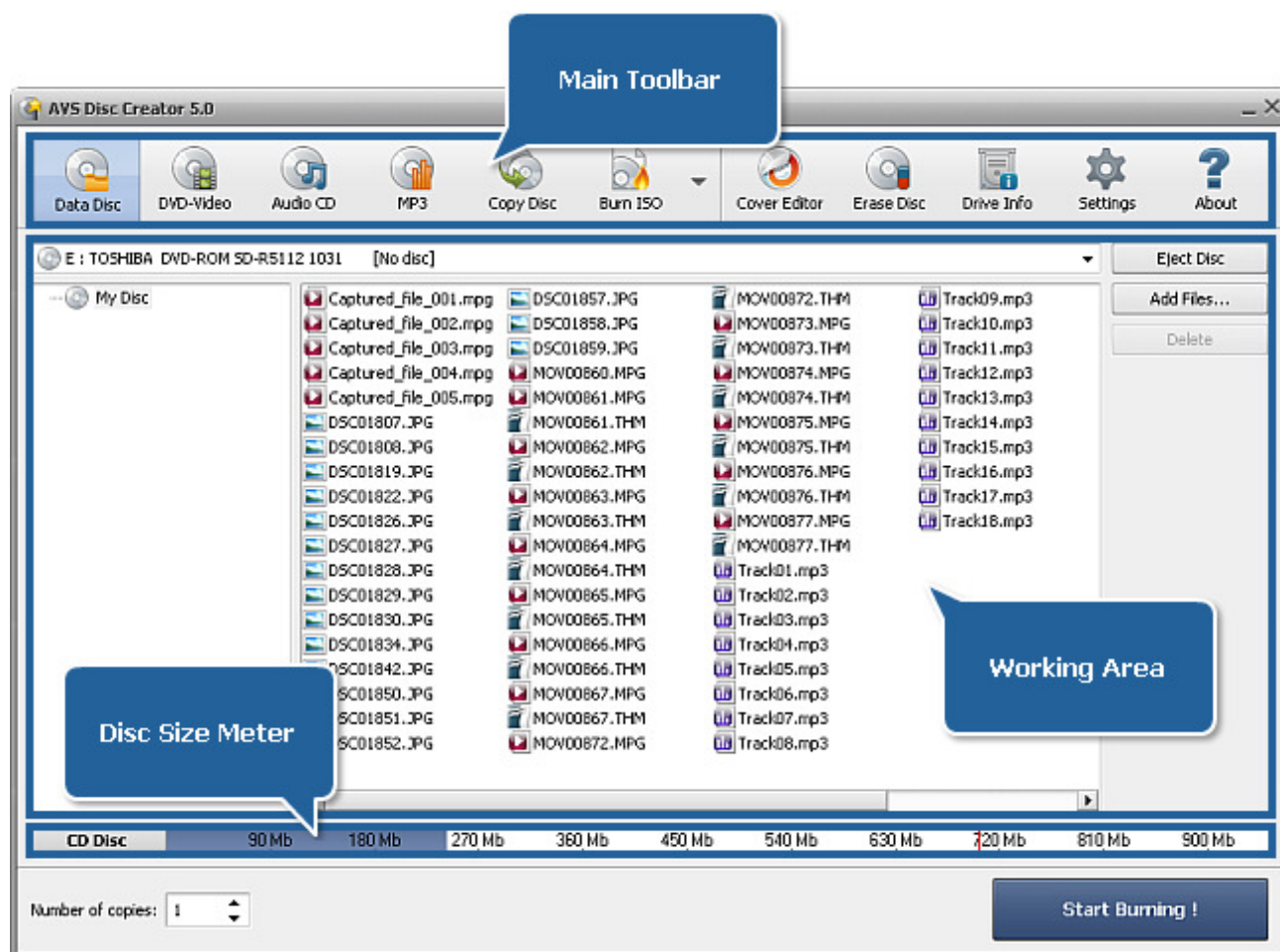
ISO images are not able to store and recreate audio CD discs, due to the fact that audio CD discs do not use a computer file system. To store an accurate copy of an audio CD disc, a different image format must be used, such as BIN/CUE.

Program Interface

AVS Disc Creator has a very intuitive interface that is easy to use and understand. When you launch the application, you will see the **Main Window** where the basic controls of the program are placed.

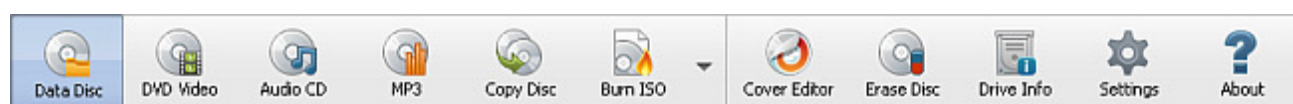
The main window of **AVS Disc Creator** consists of three principal parts:






- **Main Toolbar** contains buttons for you to select the task you want to perform.
- **Working Area** can look different depending on the button you pressed on the **Main Toolbar** and displays the main program controls.
- **Disc Size Meter** shows the size of the current disc inserted into your optical drive and the size of the data that is going to be written onto the disc.



Main Toolbar

The **Main Toolbar** contains buttons for you to select the disc type you want to create or the task you want to perform.



Button	Description
 Data Disc	Use this button to create a data CD/DVD/Blu-ray disc.
 DVD Video	Use this button to burn a DVD video from the hard disk drive of your computer onto a DVD disc.
 Audio CD	Use this button to create an audio CD from the audio files stored on your PC.
 MP3	Use this button to create a CD containing .mp3 files from the audio tracks stored on your PC.
 Copy Disc	Use this button to copy a CD/DVD/Blu-ray disc or restore a damaged disc with corrupted structure making a new readable copy of it.

 Burn ISO	Use this button to burn a disc image onto a CD, DVD or Blu-ray.
 Blu-ray	Use this button to burn Blu-ray video from your hard disk drive onto a Blu-ray disc.
 WMA	Use this button to create a CD containing .wma files from the audio tracks stored on your PC.
 Photo	Use this button to create a photo CD/DVD/Blu-ray disc.
 Bootable Disc	Use this button to create a bootable disc.
 Create ISO	Use this button to create a disc image from a disc or files stored on your PC.
 Edit ISO	Use this button to edit a disc image deleting and adding more files from the HDD of your PC.
 Cover Editor	Use this button to launch the AVS Cover Editor application to create a disc label as well as front and back cover for your disc case.
 Erase Disc	Use this button to erase a rewritable disc.
 Drive Info	Use this button to get information on your optical drive and the disc types it supports.
 Settings	Use this button to change the available burning settings.
 About	Use this button to open the About window, where you can read information on the program and our license agreement as well as open program help file and write an e-mail to our support staff.



There is one more button at the **Main Toolbar** that is used to open the **Additional Toolbar**. On this toolbar some additional task buttons are situated and it looks like in the figure on the right.

You can click one of the additional task buttons and it will appear on the **Main Toolbar** replacing the last button in the sequence. This selected task button will be activated.

To change the entire sequence of the task buttons, click the **Customize Toolbar...** button. After that the **Customize Toolbar** window will pop up.





Here you can organize the task buttons on the **Main Toolbar** as you wish. You can set the buttons, which stand for the tasks you often perform, and they will be displayed on the **Main Toolbar** at program startup for you to be able to access the needed task button quickly.

For this purpose proceed through the following steps:

1. Click the task button that will be replaced within the **Main Toolbar**
2. Click the needed button within the **Additional Toolbar** that will appear at the **Main Toolbar**
3. Press the **Swap Tasks** button

After that the selected buttons will exchange their locations.

You can also **drag and drop** any task button within the other or the same toolbar and alter its position this way.

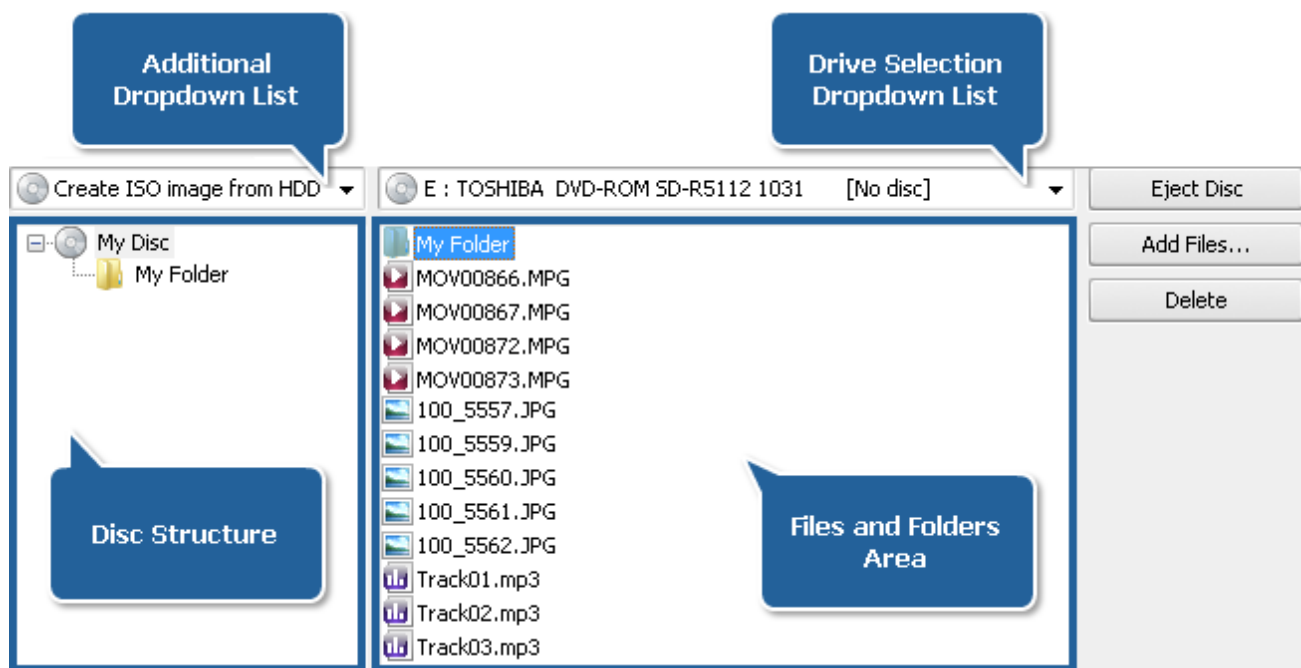
After you set the desired buttons sequence, click the **OK** button to accept the changes or the **Cancel** button to discard them and close the **Customize Toolbar** window.

Working Area

The **Working Area** can look different depending on the button you pressed on the Main Toolbar and displays the main program controls. It has three main views:

- with the **Data Disc**, **DVD Video**, **MP3**, **Burn ISO**, **Blu-ray**, **WMA**, **Photo**, **Bootable Disc**, **Create ISO** or **Edit ISO** button pressed;
- with the **Audio CD** button pressed;
- with the **Copy Disc** button pressed.

Data Disc, DVD Video, MP3, Burn ISO, Blu-ray, WMA, Photo, Bootable Disc, Create ISO, Edit ISO



In this case the **Working Area** consists of the following elements:

- **Files and Folders Area** displays the files and folders you added and want to burn onto a disc.
- **Disc Structure** displays the output disc structure.
- **Drive Selection Dropdown List** is used to select the needed destination optical drive for burning.
- **Additional Dropdown List** is only available, if you pressed the **Bootable Disc** or **Create ISO** button on the Main Toolbar.

Create ISO - Create ISO image from disc,
create ISO image from HDD

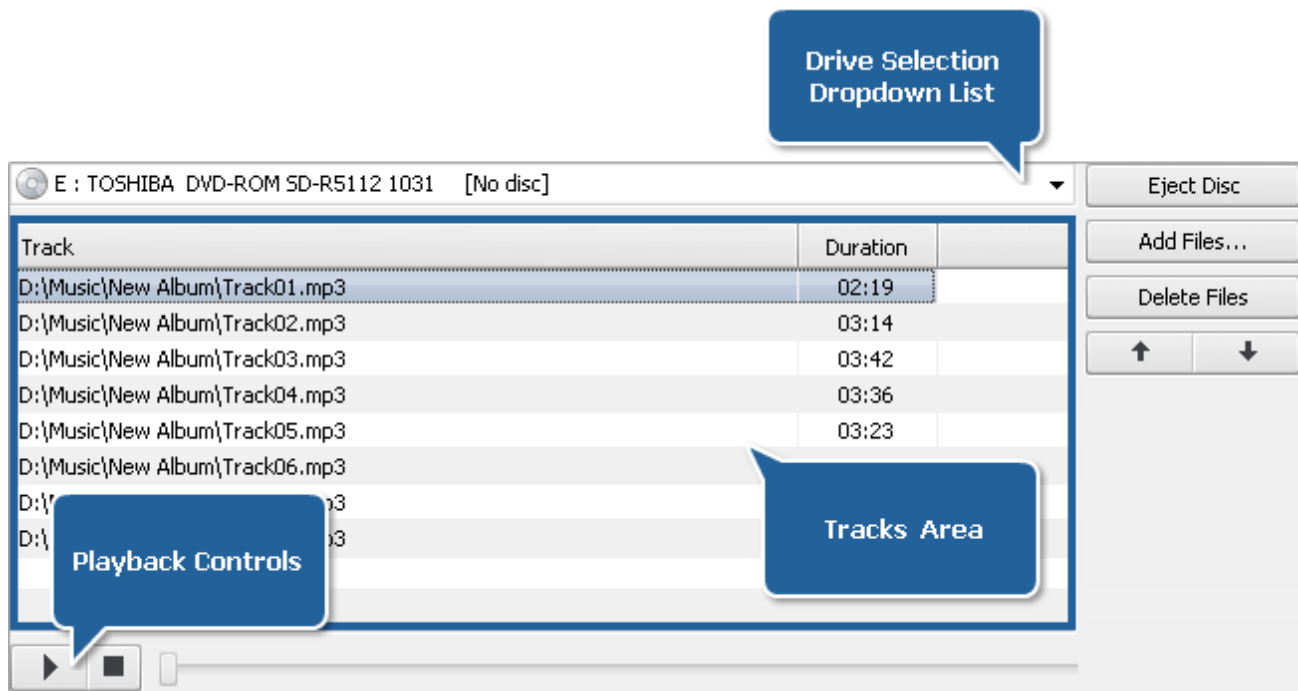
Bootable Disc - Floppy emulation, no emulation

- The **Eject Disc** button is used to eject the disc inserted into your optical drive.
- The **Add Files...** button is used to open the Select Files/ Folders window and add files and folders you want to write onto a disc.
- The **Delete** button is used to remove the selected file(s) or folder(s) from the files and folders area.



Note: depending on the task button pressed on the Main Toolbar some more buttons can be displayed on the right side of the **Working Area**.

Audio CD



In this case the **Working Area** consists of the following elements:

- **Tracks Area** displays the audio files you added and want to burn onto a CD.
- **Drive Selection Dropdown List** is used to select the needed destination optical drive for burning.
- **Playback Controls** are used to check the audio track added to the files area:



- use it to start the playback of the selected audio track; after pressing the button it will turn to the **Pause** button.

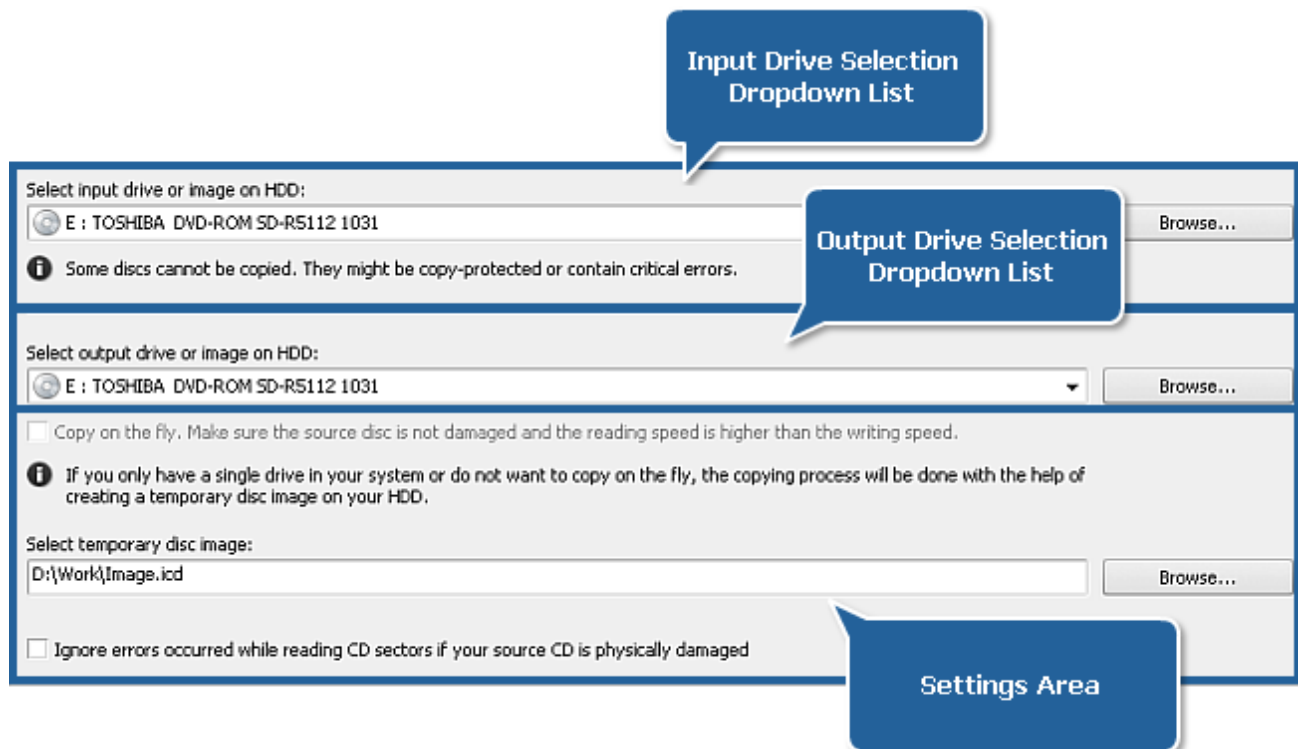


- use it to stop the audio file playback.



- move the slider indicator to the right to navigate within an audio file during playback.

Copy Disc



In this case the **Working Area** contains the following elements:

- **Input Drive Selection Dropdown List** is used to select a drive with the optical disc or disc image from your computer you want to copy.
- **Output Drive Selection Dropdown List** is used to select a drive with a blank optical disc or copy the inserted disc to an image on your HDD.
- **Settings Area** - is used to select some additional options. Checking an appropriate box you can copy from disc to disc directly, assign a location for a temporary disc image or let the program ignore errors while copying discs.

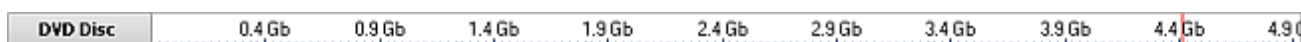
Disc Size Meter

The **Disc Size Meter** is situated at the bottom of the Main Window. It shows the size of the current disc inserted into the CD/DVD/BD drive and the size of the data that is going to be written onto the disc. Thus, depending on the disc type and its capacity the **Disc Size Meter** will look different for a **CD**, **DVD Single Layer** or **DVD Double Layer** and **Blu-ray discs** of different capacities.

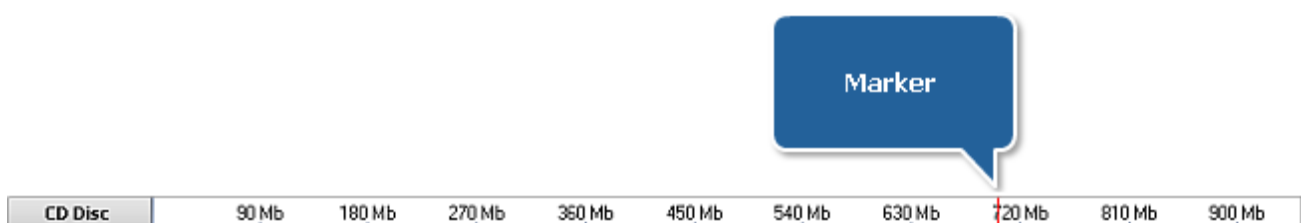
For instance, for a **Single Layer Blu-ray disc** it will look like this:



For a **DVD Single Layer** it will look like this:

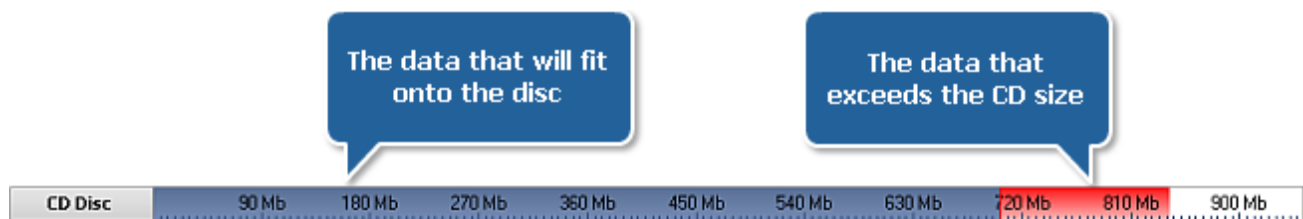


For a **CD** the **Disc Size Meter** appearance will change like this:



The **Marker** shows the standard capacity of a **CD-R** or a **CD-RW** - about 700 Megabytes.

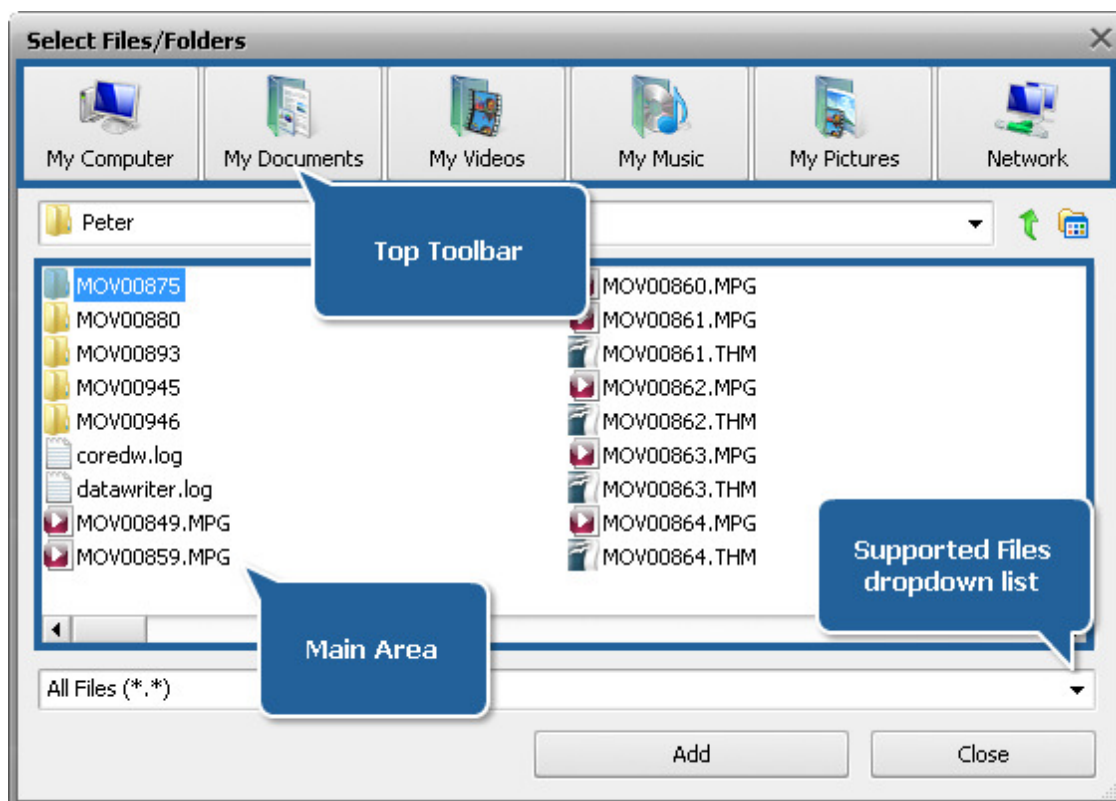
When you add data to your compilation the **Disc Size Meter** will show whether your added data is going to fit your CD/DVD/BD or if it exceeds its capacity.



If the data size is greater than the capacity of a CD/DVD/BD you should either split your data into parts and record these parts onto several CDs/DVDs/BDs or select another disc type with a larger capacity. See the **Appendix** section for more information on different disc types.



Select Files/Folders Window





The **Select Files/Folders** window appears after clicking the **Add...** button and is used to select files and folders that will be burnt onto a disc.





The window comprises the following elements:

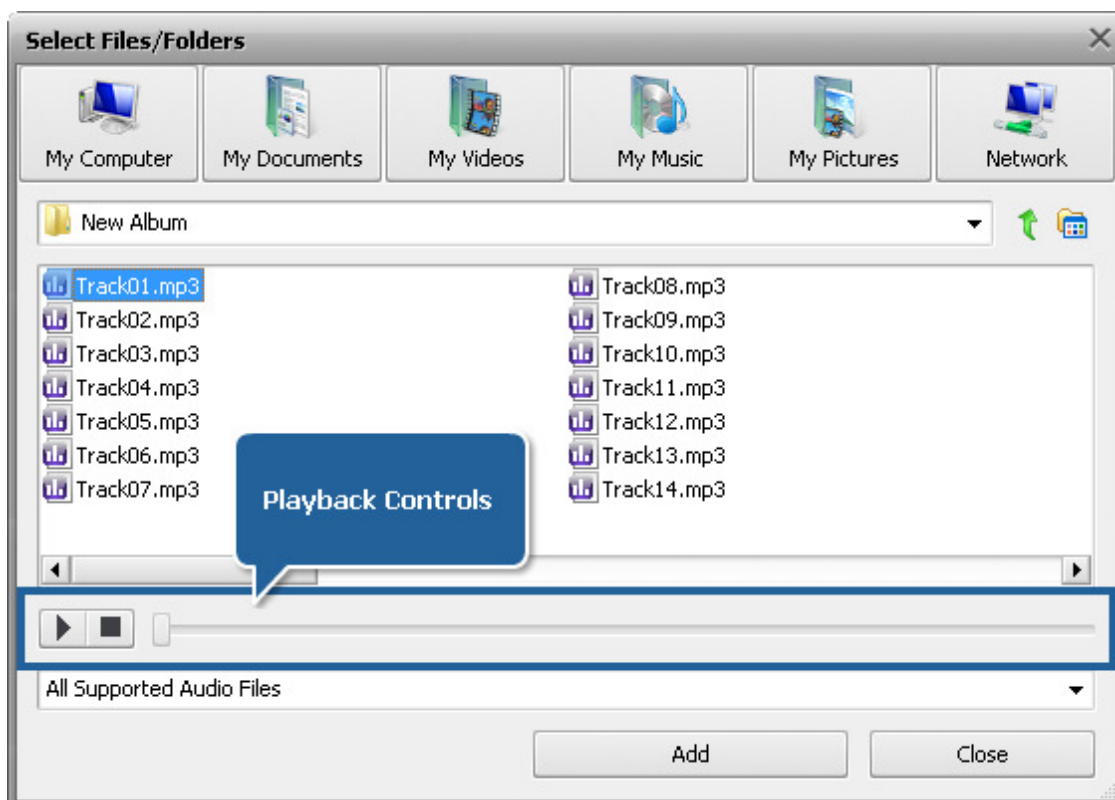
- **Top Toolbar** is used to find the necessary directory on your computer hard disk drive.

Element	Description
 My Computer	Use this button to move directly to My Computer directory of your computer hard disk drive to add files from there.
 My Documents	Use this button to move directly to My Documents directory of your computer hard disk drive to add files from there.

 My Videos	Use this button to move directly to My Videos directory of your computer hard disk drive to add files from there.
 My Music	Use this button to move directly to My Music directory of your computer hard disk drive to add files from there.
 My Pictures	Use this button to move directly to My Pictures directory of your computer hard disk drive to add files from there.
 Network	Use this button to move directly to your network drive and add files from there.

In the dropdown list situated under the **Top Toolbar** the whole folder tree is displayed that will help you navigate through the files and folders system on your hard disk drive. Using the  button you can easily go to a level that is parent to the current one. The  button situated nearby will help you find a necessary file or folder, as it changes the view of the files/folders list - you can select among **Icons**, **List** and **Details**.

- **Main Area** is used to see the contents of the selected directory.
- **Supported Files** dropdown list is used to choose the necessary file format that can help you find the wanted files.
- **Playback Controls** are shown only if you want to create an audio CD, MP3 or WMA disc. You can play back the audio track selected in the **Main Area** to make sure it is the right one.



Settings Window



The **Settings** button is available for the burning tasks only. After clicking it the **Settings** window will open. It varies depending on the task button selected and has two views.



Note: you cannot adjust settings for the following tasks: **Copy Disc**, **Create ISO** and **Edit ISO**.

Settings for Data, DVD/BD Video and Disc Image Burning

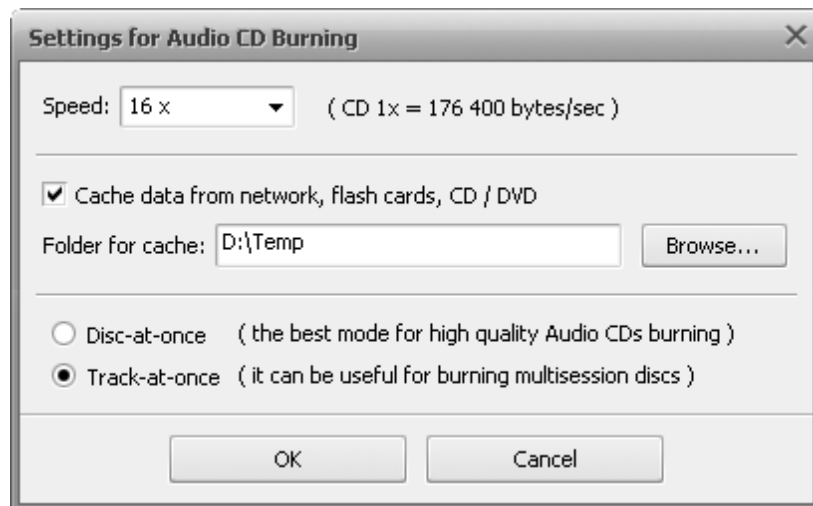
Here you can change the following parameters:

Disc Label	The name of the disc. You can enter any name you like best.
Speed	Possible recording speeds for this drive and disc.
Verify Disc	Mark this check-box to verify the burned data after the recording process is over to make sure the disc was recorded without any errors.
Finalize Disc	Close the disc after the data is written. You won't be able to add any data to the disc if this check-box is ticked. If you want to record a multisession disc you should leave this check-box unchecked.
JOLIET Structure	The extended ISO file system that allows you to use the additional set of file names (up to 64 characters in length) with Unicode multilanguage support.
UDF Structure	Universal Disk Format - the modern file system supporting larger files, larger file names (up to 256 characters in length), larger discs and more information about individual files and folders. It includes support for special file properties and other OS-specific data.
Cache Data	Tick this option to copy data that you want to write from some distant source (such as network, flash cards, optical discs, etc.) to a temporary folder on your hard disk drive to shorten the average access time to the data. Clicking the Browse button you can select a temporary folder on your HDD where the data will be copied to. After that the path to it will be displayed in the Folder for Cache field.

In case you are going to record DVD/Blu-ray video the **Finalize Disc** setting will be disabled and no change of this setting will be possible. That is done to ensure compatibility with the hardware DVD/BD players. The **JOLIET Structure** also cannot be used, as DVD/Blu-ray video discs use only UDF file structure. That's why the whole section is disabled and the **UDF** option is checked by default.

After you set all the parameters you can accept all the changes made clicking the **OK** button. To discard the changes press the **Cancel** button. In both cases the window will be closed.

Settings for Audio CD Burning



Here you can change the following parameters:

Speed	Possible recording speeds for this drive and disc.
Cache data	Tick this option to copy data that you want to write from some distant source (such as network, flash cards, optical discs, etc.) to a temporary folder on your hard disk drive to shorten the average access time to the data. Clicking the Browse button you can select a temporary folder on your HDD where the data will be copied to. After that the path to it will be displayed in the Folder for Cache field.
Disc-at-once	This mode masters the disc contents in one pass. Select it if you want to write a high quality audio CD.
Track-at-once	That is a recording mode where a recording laser stops after each track is finished. This option can be useful for burning multisession discs.

After you set all the parameters you can accept all the changes made clicking the **OK** button. To discard the changes press the **Cancel** button. In both cases the window will be closed.






Express Menu

The **AVS Disc Creator** interface offers you a convenient tool to facilitate the access to the main program operations. That is the **Express Menu**. It can be opened right-clicking one of the items within the Working Area of the Main Window or Select Files/Folders window.

Express Menus of the Main Window






Files and Folders Area

- **Level Up** - use it to go to a level that is parent to the current one.
- **Add Files** - use it to add more files to the program.
- **New Folder** - use it to create a new folder.
- **View** - use it to change the view of items in the files and folders area. The following options are available: list, details.
- **Arrange Output Files by** - use it to arrange the items that will be burned onto disc in the selected order by name, size, type or date.
- **Delete** - use it to delete the selected item from the files and folders area.
- **Delete All** - use it to delete all items from the files and folders area.
- **Rename** - use it to give the selected item another name.
- **Settings** - use it to adjust the available burning settings.
- **Erase Disc** - use it to erase the inserted disc, if it's not empty.
- **Start Burning!** - use it to begin the burning process.

	Level Up	
	Add Files...	
	New Folder	F7
	View	▶
	Arrange Output Files by	▶
	Delete	
	Delete All	
	Rename	F2
	Settings	
	Erase Disc	
	Start Burning !	





Disc Structure Area

- **Add Files** - use it to add more files to the program.
- **New Folder** - use it to create a new folder.
- **Delete Folder** - use it to delete the selected folder from the disc structure.
- **Delete All** - use it to delete all items from the disc structure.
- **Rename** - use it to give the selected item another name.
- **Expand All** - use it to open all folders.
- **Collapse All** - use it to close all folders.
- **Settings** - use it to adjust the available burning settings.
- **Erase Disc** - use it to erase the inserted disc, if it's not empty.
- **Start Burning!** - use it to begin the burning process.

	Add Files...	
	New Folder	F7
	Delete Folder	
	Delete All	
	Rename	F2
	Expand All	
	Collapse All	
	Settings	
	Erase Disc	
	Start Burning !	


Tracks Area

- **Add Files** - use it to add more files to the program.
- **Delete Files** - use it to delete the selected file(s) from the files area.
- **Delete All** - use it to delete all files from the files area.
- **Select All** - use it to highlight all files in the files area.
- **Invert Selection** - use it to highlight all files except the marked one(s).
- **Settings** - use it to adjust the available burning settings.
- **Erase Disc** - use it to erase the inserted disc, if it's not empty.
- **Start Burning!** - use it to begin the burning process.

	Add Files...	Ins
	Delete Files	Del
	Delete All	
	Select All	Ctrl+A
	Invert Selection	Ctrl+I
	Settings	
	Erase Disc	
	Start Burning !	

Express Menu of the Select Files/Folders Window

- **Level Up** - use it to go to the level that is parent to the current one.
- **Add** - use it to add the selected file(s) or folder(s) to the program.
- **View** - use it to change the view of items in the main area of the Select Files/Folders window.
The following options are available: icons, list, details.
- **My Computer** - use it to move directly to **My Computer** directory of your computer hard disk drive to add files from there.
- **My Documents** - use it to move directly to **My Documents** directory of your computer hard disk drive to add files from there.
- **Network** - use it to move directly to **Network** directory of your computer hard disk drive to add files from there.
- **Select All** - use it to highlight all the items.
- **Close** - use it to close the Select Files/Folders window.

	Level Up
	Add
	View ▾
	My Computer
	My Documents
	Network
	Select All Ctrl+A
	Close

Keyboard Shortcuts

The **AVS Disc Creator** interface allows you to use keyboard shortcuts to facilitate the access to the main program features. They are represented in the table below:

Keys	Description
F7	Is used to create a new folder in the files and folders list.
F2	Is used to rename a file or folder in the files and folders list.
Ins	Is used to add the selected file or folder to the main window of the program.
Del	Is used to delete the selected file or folder.
Ctrl + A	Is used to select all items in the files and folders list.
Ctrl + I	Is used to invert selection in the files and folders list.
Top Arrow	Is used to move up in the files and folders list.
Bottom Arrow	Is used to move down in the files and folders list.
F1	Is used to open the AVS Disc Creator help file.
Alt + F4	Is used to finish working with the program and exit.

Working with AVS Disc Creator

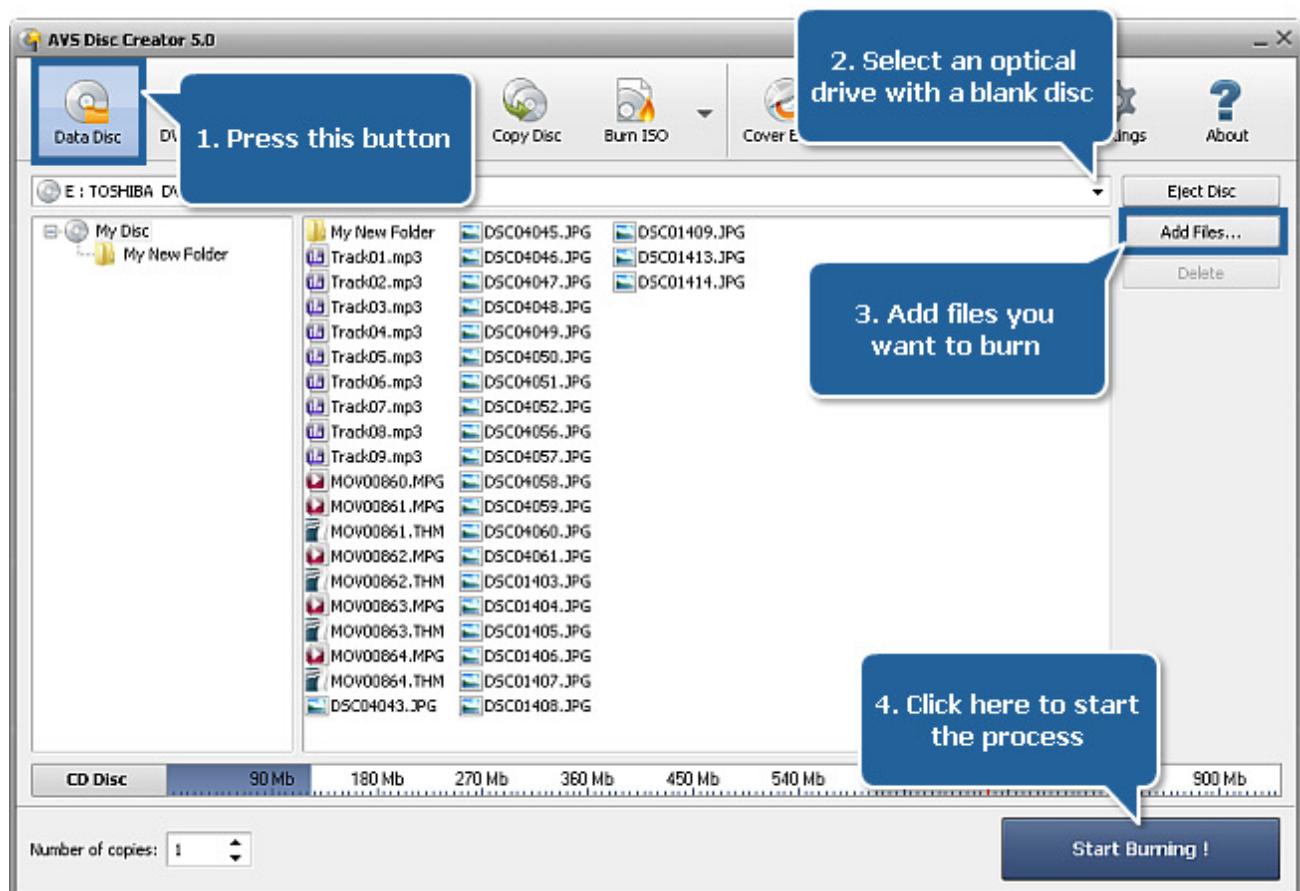
Data Disc



Data discs can contain files of any type: document files (.txt, .html, .doc, .odt, etc.), audio files (.mp3, .wma, .wav, etc.), video files (.avi, .mov, .mpeg, etc.), image files (.png, .jpg, .gif, etc.) and so on.



Note: Even if you create a disc containing only video files in such formats like .avi, .mp4 etc., it will be called a data disc. As many home DVD/BD players do not have the ability to play such video files, they are not considered to be video discs.



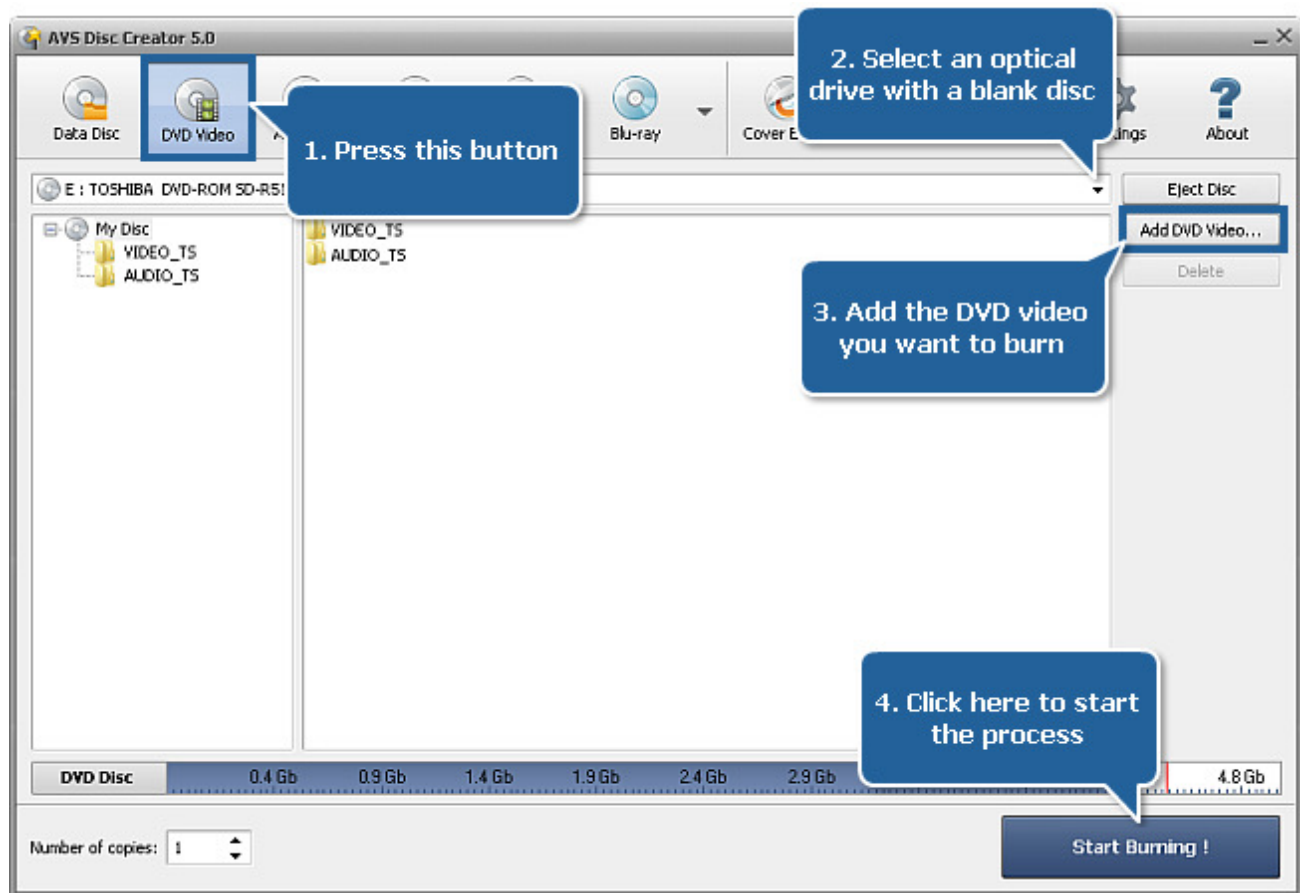
To create a data disc proceed through the following easy steps:

1. Press the **Data Disc** button on the Main Toolbar.
2. Insert a blank CD/DVD/Blu-ray disc into your optical drive. Select this drive in the **Drive Selection Dropdown List** if you have several drives in your system. The disc inserted into the drive will be automatically detected and opened.
3. Click the **Add Files...** button to open the Select Files/Folders window and add files to the **Files and Folders Area** for burning.
4. Have a look at the Disc Size Meter to make sure all the data fits to the inserted disc.
5. Click the **Settings** button to view and adjust the burning settings.
6. Select the number of disc copies, which you would like to create, in the **Number of Copies** field.
7. Click the **Start Burning!** button to review burning settings and launch the process.

DVD Video



DVD Video discs contain both audio and video signals and have a specific folders structure. They store DVD video of a special format supporting features such as menus, selectable subtitles, multiple camera angles and multiple audio tracks. Such discs can be played back in all home DVD players.



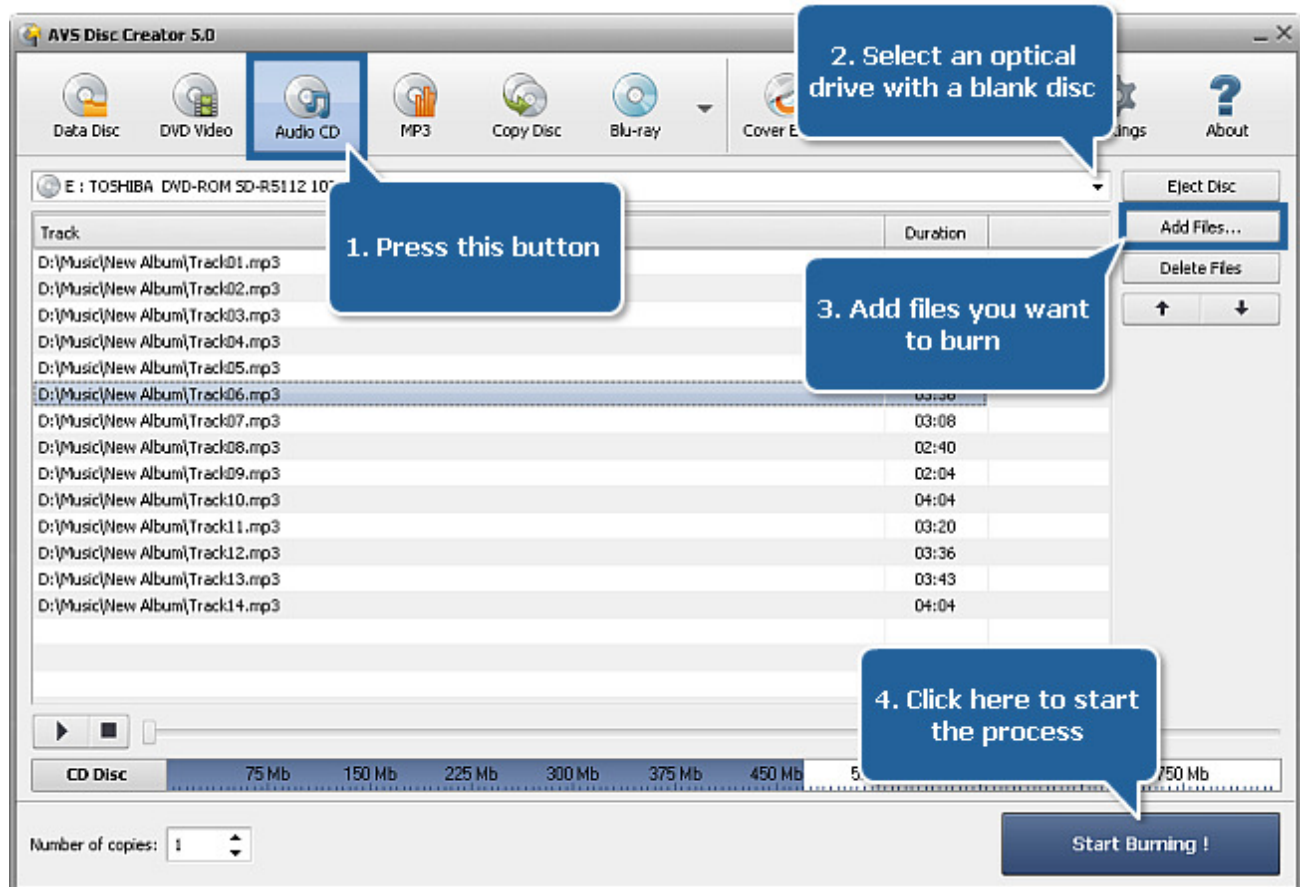
To create a DVD video disc proceed through the following easy steps:

1. Press the **DVD Video** button on the Main Toolbar.
2. Insert a blank DVD disc into your optical drive. Select this drive in the **Drive Selection Dropdown List** if you have several drives in your system. The disc inserted into the drive will be automatically detected and opened.
3. Click the **Add DVD Video...** button to open the Select Files/Folders window and add the VIDEO_TS folder to the **Files and Folders Area** for burning.
4. Have a look at the Disc Size Meter to make sure all the data fits to the inserted disc.
5. Click the **Settings** button to view and adjust the burning settings.
6. Select the number of disc copies, which you would like to create, in the **Number of Copies** field.
7. Click the **Start Burning!** button to review burning settings and launch the process.

Audio CD



Audio CD discs are designed to be used in a consumer audio CD recorder, which use Serial Copy Management System (SCMS), an early form of Digital Rights Management (DRM). Audio tracks on such a disc have the .cda extension. Audio CD discs are formatted in tracks, and the track numbers, index points and CD time code are encoded into the lead-in of the audio CD disc, and these reference points are found throughout the audio CD sub-channel.



To create an audio CD disc proceed through the following easy steps:

1. Press the **Audio CD** button on the Main Toolbar.
2. Insert a blank CD disc into your optical drive. Select this drive in the **Drive Selection Dropdown List** if you have several drives in your system. The disc inserted into the drive will be automatically detected and opened.
3. Click the **Add Files...** button to open the Select Files/Folders window and add audio files to the **Files and Folders Area** for burning.



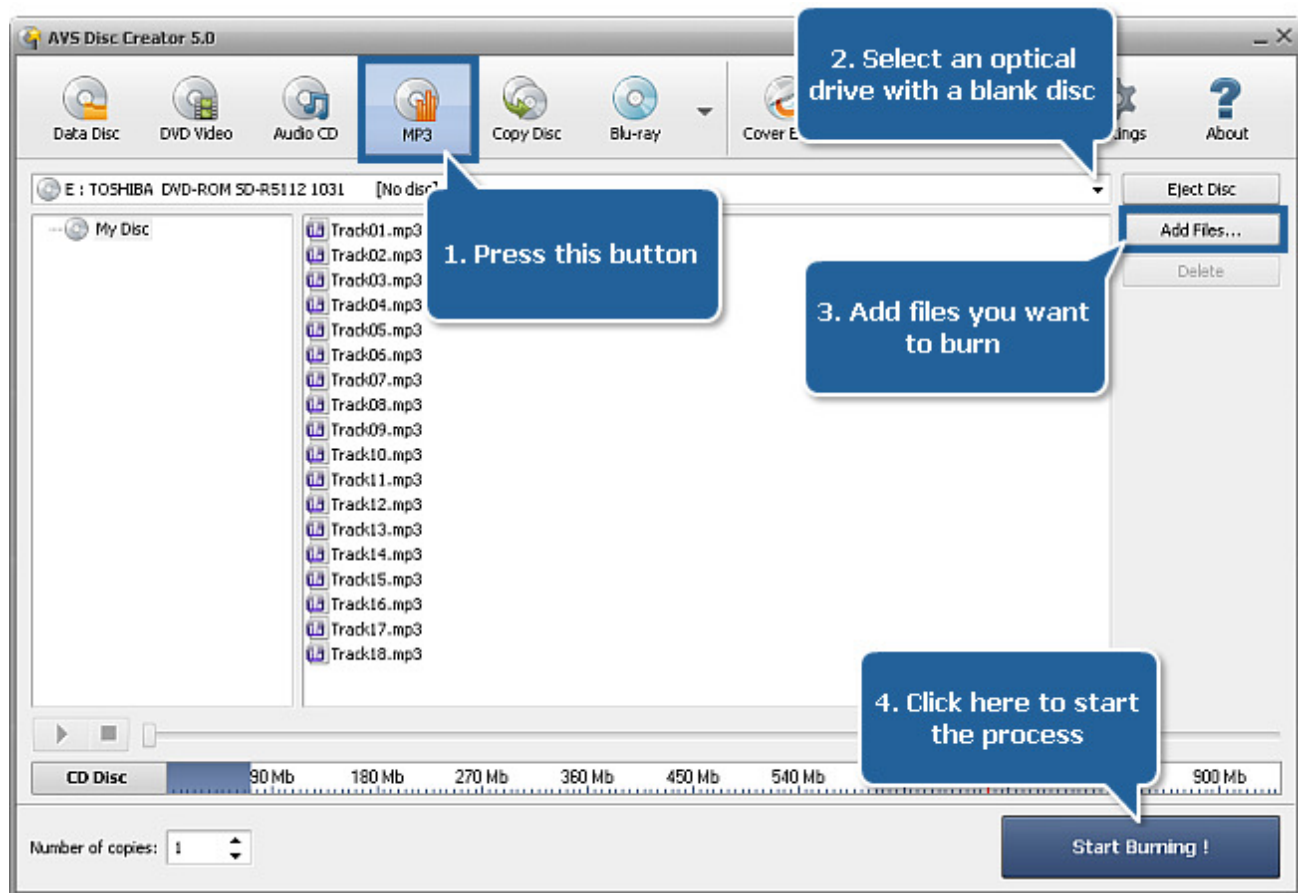
Note: it's possible to load audio files of the following formats to create an audio CD: WAV, MP3, WMA, AAC, M4A, OGG, MP2, MPC, AIFF, AU, FLAC.

4. Then you can locate the imported audio files in a certain sequence by using the arrow buttons. With every button click the highlighted track will be placed upper or lower in the list depending on the arrow button you press.
5. Have a look at the Disc Size Meter to make sure all the data fits to the inserted disc.
6. Click the **Settings** button to view and adjust the burning settings.
7. Select the number of disc copies, which you would like to create, in the **Number of Copies** field.
8. Click the **Start Burning!** button to review burning settings and launch the process. The added audio files will be converted to the **.cda** format and burnt onto the inserted CD.

MP3



Pressing the **MP3** button you can create discs containing audio files in the MP3 format. It is a common audio format for consumer audio storage, as well as a de facto standard of digital audio compression for the transfer and playback of music on digital audio players.



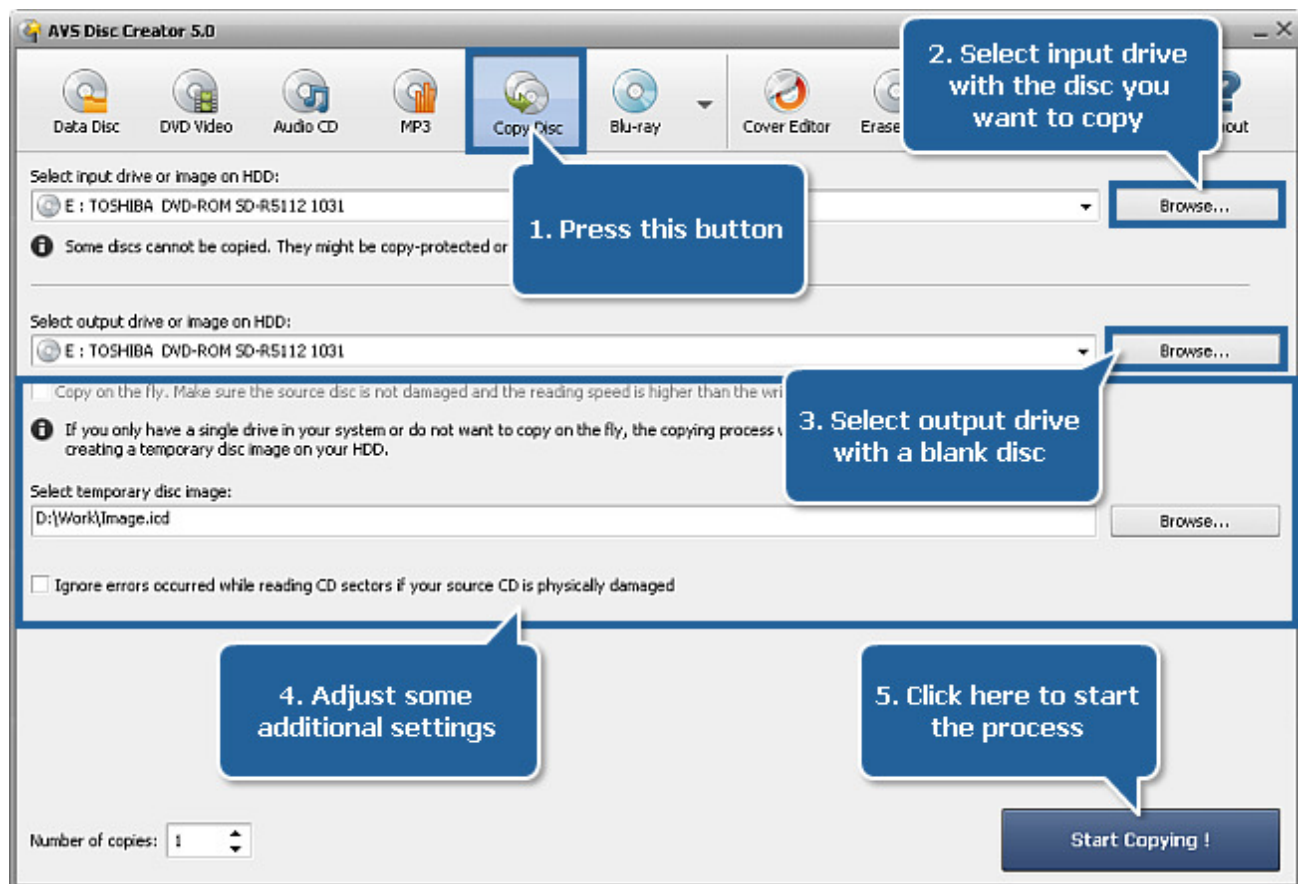
To create a disc with MP3 tracks proceed through the following easy steps:

1. Press the **MP3** button on the Main Toolbar.
2. Insert a blank CD/DVD/Blu-ray disc into your optical drive. Select this drive in the **Drive Selection Dropdown List** if you have several drives in your system. The disc inserted into the drive will be automatically detected and opened.
3. Click the **Add Files...** button to open the Select Files/Folders window and add .mp3 audio files to the **Files and Folders Area** for burning.
4. Have a look at the Disc Size Meter to make sure all the data fits to the inserted disc.
5. Click the **Settings** button to view and adjust the burning settings.
6. Select the number of disc copies, which you would like to create, in the **Number of Copies** field.
7. Click the **Start Burning!** button to review burning settings and launch the process.

Copy Disc



The **Copy Disc** button is used to create an exact copy of the source disc. No data will be changed and no video will be compressed on the target disc as compared to the source disc. Using this button you can also create a readable copy of a damaged disc.



To copy a disc proceed through the following easy steps:

1. Press the **Copy Disc** button on the Main Toolbar.
2. Insert the CD/DVD/Blu-ray disc you want to copy into your optical drive. Select this drive in the **Input Drive Selection Dropdown List** if you have several drives in your system. The disc inserted into the drive will be automatically detected and opened. Or select a disc image from your computer hard disk drive.
3. Insert a blank CD/DVD/Blu-ray disc into another optical drive. Choose this drive in the **Output Drive Selection Dropdown List** if you have several drives in your system. Or select a disc image from your computer hard disk drive.
4. If you select different drives as input and output, the **Copy on the fly** option will become available. By checking it you'll be able to make a copy of a disc directly, without first saving the source onto an intermediate medium (hard disk drive).

If you clone a CD/DVD/BD having only one disc drive, this option will be grayed out and a temporary image on your computer HDD will be created to let you record the resulting disc using the same disc drive. In this case **select a location for the temporary disc image** and make sure that you have enough free space there. The image size can be up to almost 200 gigabytes for a six-layer BD.

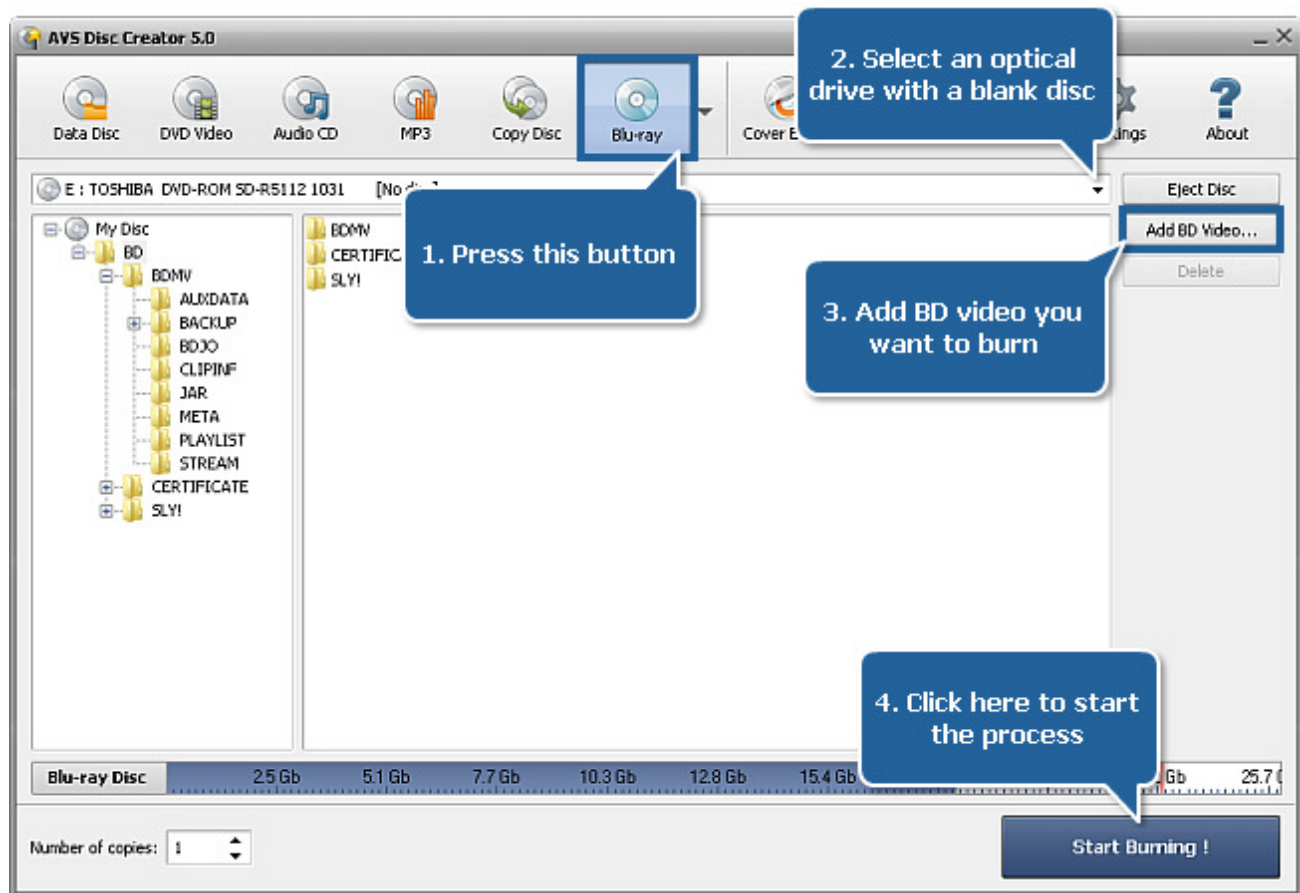
The **Ignore errors occurred while reading CD sectors if your source CD is physically damaged** option lets you copy damaged discs. In case you know that your disc is physically damaged (e.g. scratched) the program will still let you copy such a disc replacing the defective areas with zero bytes. Thus the disc will become readable again, though some of the information might be lost.

5. Select the number of disc copies, which you would like to create, in the **Number of Copies** field.
6. Click the **Start Copying!** button to launch the process.

Blu-ray



Blu-ray Video discs contain both audio and video signals and have a specific folders structure. They store Blu-ray video of a special format supporting features such as menus, selectable subtitles, multiple camera angles and multiple audio tracks. Such discs can be played back in all home BD players.



To create a Blu-ray video disc proceed through the following easy steps:

1. Press the **Blu-ray** button on the Main Toolbar.
2. Insert a blank BD disc into your optical drive. Select this drive in the **Drive Selection Dropdown List** if you have several drives in your system. The disc inserted into the drive will be automatically detected and opened.
3. Click the **Add BD Video...** button to open the Select Files/Folders window and add the folder containing the BDMV, CERTIFICATE and SLY! folders to the **Files and Folders Area** for burning.



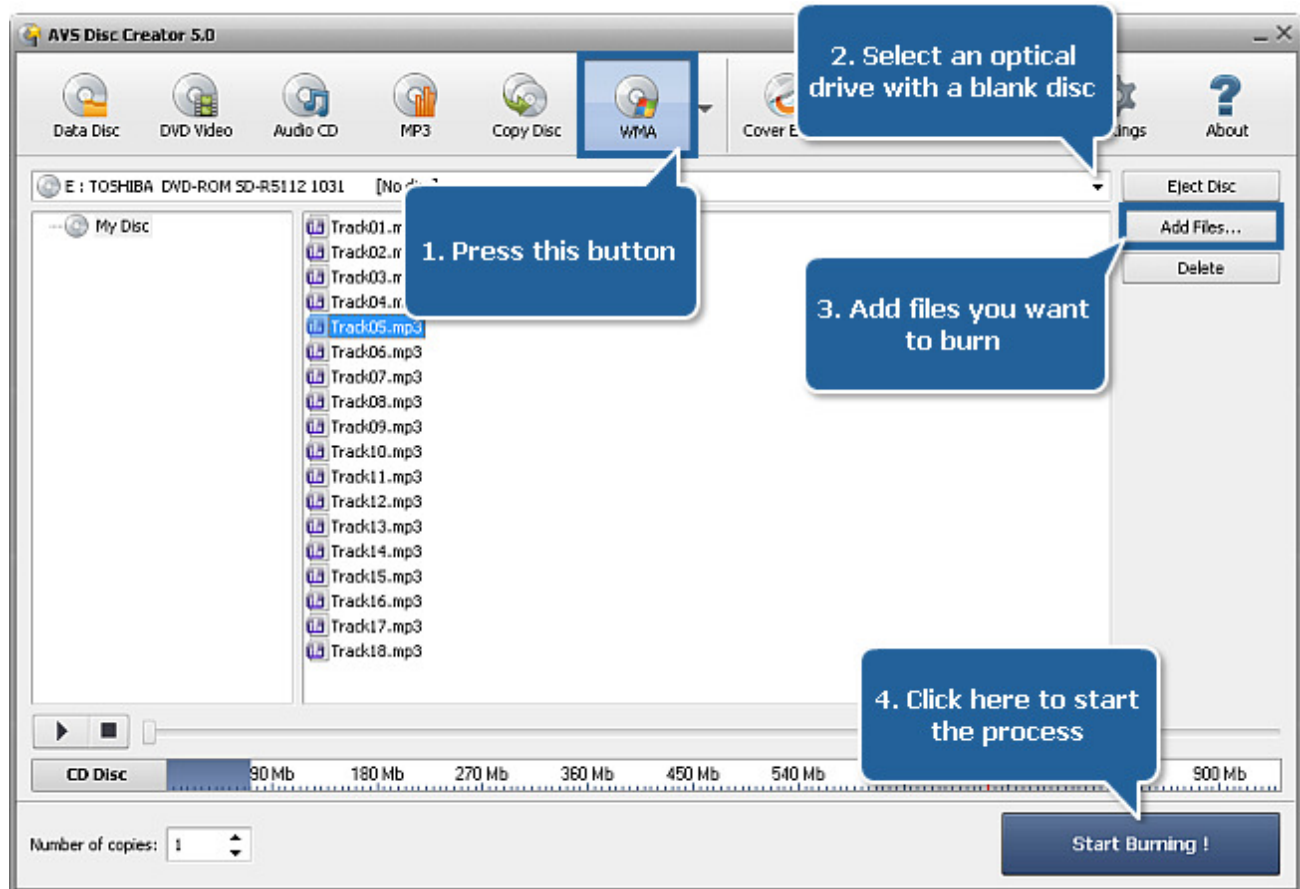
Note: the SLY! folder is not always present in Blu-ray files structure.

4. Have a look at the Disc Size Meter to make sure all the data fits to the inserted disc.
5. Click the **Settings** button to view and adjust the burning settings.
6. Select the number of disc copies, which you would like to create, in the **Number of Copies** field.
7. Click the **Start Burning!** button to review burning settings and launch the process.

WMA



Pressing the **WMA** button you can create discs containing audio files in the WMA format. It is an audio data compression technology developed by Microsoft. It claims that audio encoded with WMA sounds better than MP3 at the same bitrate.



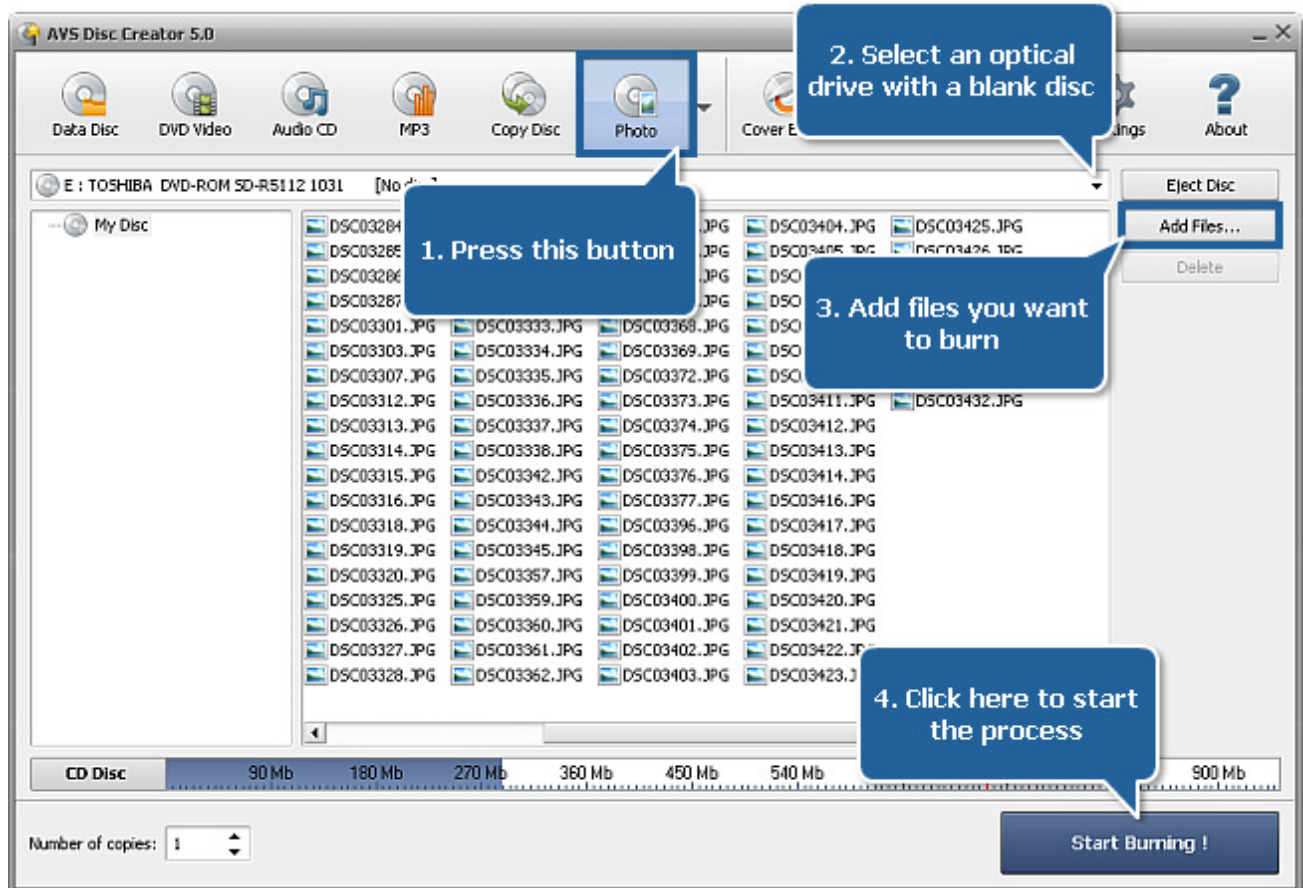
To create a disc with WMA tracks proceed through the following easy steps:

1. Press the **WMA** button on the Main Toolbar.
2. Insert a blank CD/DVD/Blu-ray disc into your optical drive. Select this drive in the **Drive Selection Dropdown List** if you have several drives in your system. The disc inserted into the drive will be automatically detected and opened.
3. Click the **Add Files...** button to open the Select Files/Folders window and add .wma audio files to the **Files and Folders Area** for burning.
4. Have a look at the Disc Size Meter to make sure all the data fits to the inserted disc.
5. Click the **Settings** button to view and adjust the burning settings.
6. Select the number of disc copies, which you would like to create, in the **Number of Copies** field.
7. Click the **Start Burning!** button to review burning settings and launch the process.

Photo



Pressing the **Photo** button you can create discs containing image files.



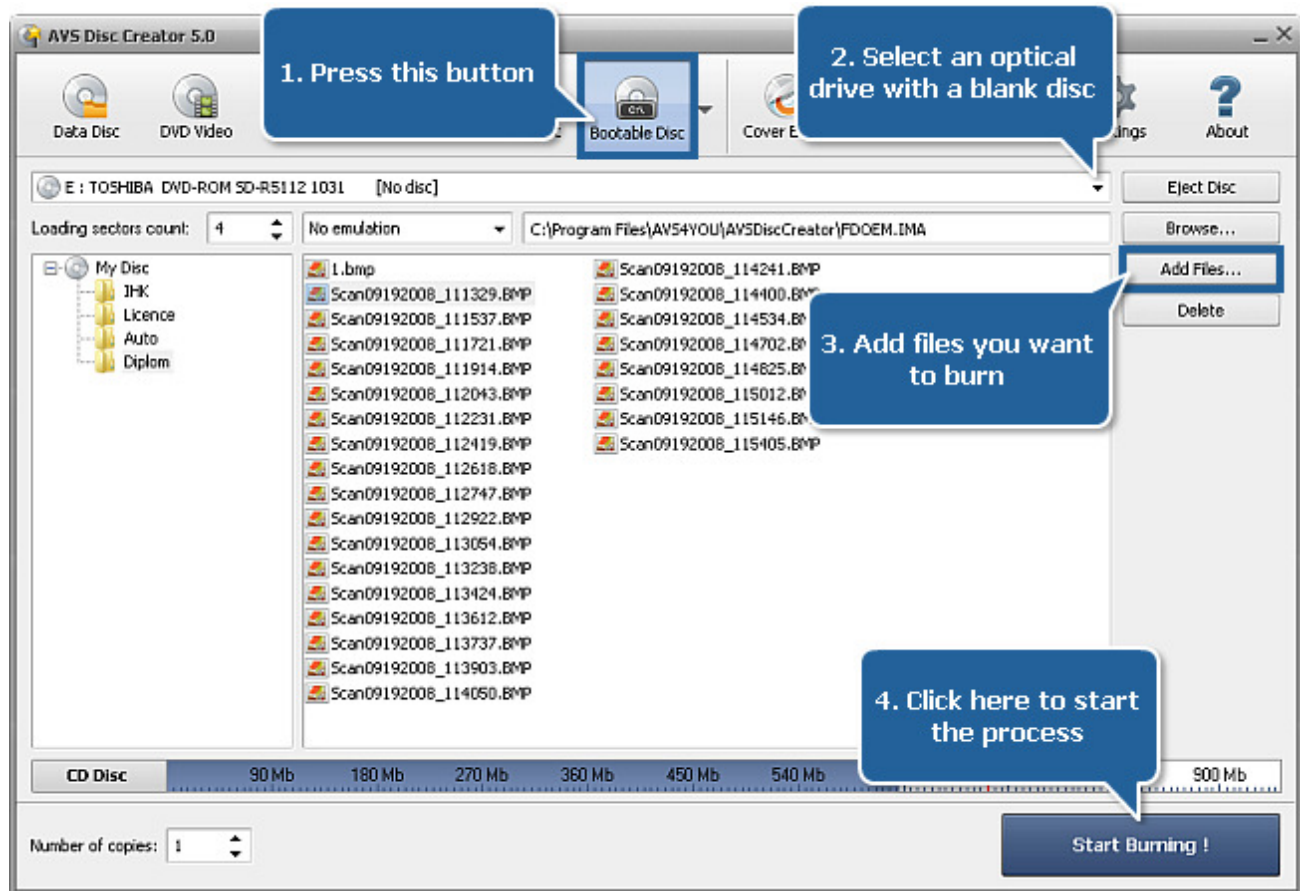
To create a disc with photos proceed through the following easy steps:

1. Press the **Photo** button on the Main Toolbar.
2. Insert a blank CD/DVD/Blu-ray disc into your optical drive. Select this drive in the **Drive Selection Dropdown List** if you have several drives in your system. The disc inserted into the drive will be automatically detected and opened.
3. Click the **Add Files...** button to open the Select Files/Folders window and add image files of any format to the **Files and Folders Area** for burning.
4. Have a look at the Disc Size Meter to make sure all the data fits to the inserted disc.
5. Click the **Settings** button to view and adjust the burning settings.
6. Select the number of disc copies, which you would like to create, in the **Number of Copies** field.
7. Click the **Start Burning!** button to review burning settings and launch the process.

Bootable Disc



Bootable Discs discs are removable digital data storage media, from which a computer can load and run an operating system or utility program. Bootable disks are used for: operating system installation, data recovery, data purging, hardware or software troubleshooting, customizing an operating environment, games, etc.



To create a bootable disc proceed through the following easy steps:

1. Press the **Bootable Disc** button on the Main Toolbar.
2. Insert a blank CD/DVD/Blu-ray disc into your optical drive. Select this drive in the **Drive Selection Dropdown List** if you have several drives in your system. The disc inserted into the drive will be automatically detected and opened.
3. Click the **Add Files...** button to open the Select Files/Folders window and add files to the **Files and Folders Area** for burning.
4. Decide whether you would like to create a bootable disc with **floppy emulation** or with **no emulation**. If you select the latter option you can set the **loading sectors count** and browse for a boot file.

Note:

- the **floppy emulation** option is selected by default. It lets you create a bootable disc where the boot information is stored in an image file of a floppy disk, which is loaded from the CD and then behaves as a virtual floppy disk.
- the **no emulation** option is designed for experienced users only! You should know exactly what bootable file you need and the necessary number of loading sectors.

5. Have a look at the Disc Size Meter to make sure all the data fits to the inserted disc.
6. Click the **Settings** button to view and adjust the burning settings.
7. Select the number of disc copies, which you would like to create, in the **Number of Copies** field.
8. Click the **Start Burning!** button to review burning settings and launch the process.

Disc Image

AVS Disc Creator supports the most popular disc image types:

Type	Read	Write	Create
Standard Disc Image Files <ul style="list-style-type: none"> • *.iso 	+	+	+
AVS Disc Creator Image Files (created by older versions of AVS Disc Creator) <ul style="list-style-type: none"> • *.icd, *.bin 	+	+	+
CDRWin Image Files <ul style="list-style-type: none"> • *.cue, *.bin 	+	+	-
Nero-Burning ROM Image Files <ul style="list-style-type: none"> • *.nrg 	+	+	-
Alcohol 120% Image Files <ul style="list-style-type: none"> • *.mds, *.mdf 	+	+	-
InstantCopy Image Files <ul style="list-style-type: none"> • *.pdi (CD image files) • *.pdi, *.pdi01, *.pdi02, *.pdi02, *.pdi04 (DVD image files) 	+	+	-
BlindWrite 4 Image Files <ul style="list-style-type: none"> • *.bwt, *.bwi 	+	+	-
BlindWrite 5 Image Files <ul style="list-style-type: none"> • *.b5t, *.b5i (CD image files) • *.b5t, *.b5i, *.b00, *.b01 (DVD image files) 	+	+	-
BlindWrite 6 Image Files <ul style="list-style-type: none"> • *.b6t, *.b6i (CD image files) • *.b6t, *.b6i, *.b00, *.b01 (DVD image files) 	+	+	-
CloneCD Image Files <ul style="list-style-type: none"> • *.ccd, *.sub, *.img • *.dvd, *.000, *.001, *.002, *.003, *.004 (DVD image files) 	+	+	-

PowerISO Image Files ● *.daa	+	+	-
DiscJuggler Image Files ● *.cdi	+	+	-
MagicISO Maker Image Files ● *.uif	+	+	-
5star Game Copy Image Files ● *.xmd, *.xmf	+	+	-
Prassi_ONES Image Files ● *.dj, *.di01a (CD image files) ● *.dj, *.di01a, *.di01b, *.dio1c, *.di01d (DVD image files)	+	+	-
IsoBuster Image Files ● *.ibp, *.ibq (CD image files) ● *.ibp, *.ibq, *.ibq01, *.ibq02, *.ibq03 (DVD image files)	+	+	-
Power2Go Image Files ● *.p2i, *.rif, *.C00 (CD image files) ● *.p2i, *.rif, *.C00, *.C01, *.C02 (DVD image files)	+	+	-
VaporCD Image Files ● *.VaporCD	+	+	-
Virtual CD-ROM Image Files ● *.fcd	+	+	-
Virtual Drive Image Files ● *.vcd	+	+	-
Virtuo CD Manager Image Files ● *.vdi	+	+	-
Ashampoo BurningStudio Image Files ● *.ashdisc	+	+	-

Virtual CD Image Files <ul style="list-style-type: none"> • *.vc4, *.000 (CD image files) • *.vc4, *.000, *.001, *.002, *.003, *.004 (DVD image files) 	+	+	-
NTI CD&DVD Maker Image Files <ul style="list-style-type: none"> • *.ncd 	+	+	-
Gear Image Files <ul style="list-style-type: none"> • *.dat 	+	+	-
WinOnCD Image Files <ul style="list-style-type: none"> • *.c2d 	+	+	-

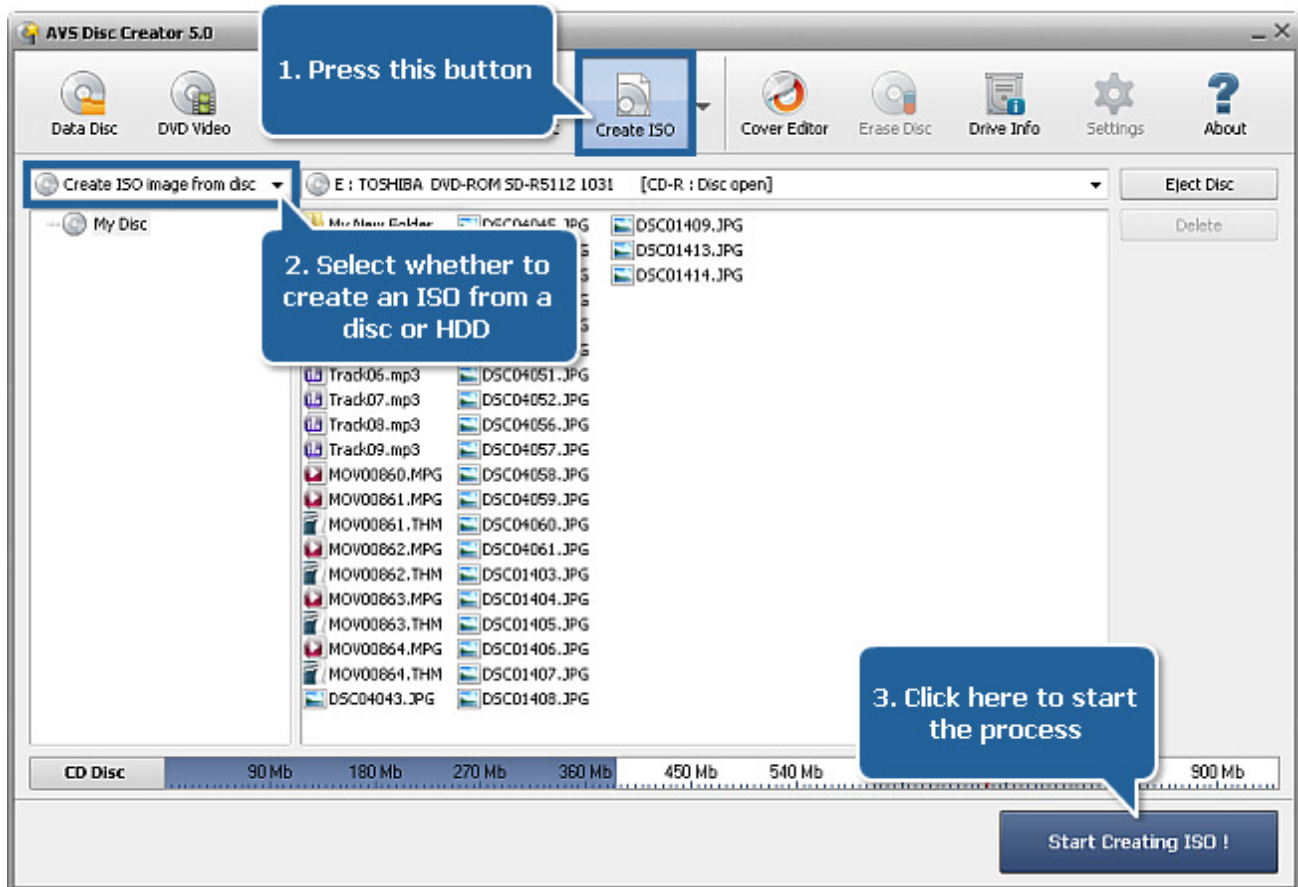


Note: it means that the variety of disc image types can be used as input files, but only ISO images will be produced by the **AVS Disc Creator** application. So if you edit or create a disc image, the result will be saved in .iso format.

Create ISO



Using the **Create ISO** button you can create an image from your disc prior to recording it onto a CD, a DVD or a BD, e.g. if you want to make several copies with the same content. So creating a disc image you can save a lot of time. You can burn this image onto a CD, a DVD or a BD later if you would like to using **AVS Disc Creator** or mount it to some third party virtual drive. **AVS Disc Creator** supports a variety of **disc image formats**.



To create a disc image proceed through the following easy steps:

1. Press the **Create ISO** button on the Main Toolbar.
2. Select whether you would like to create a disc image from an **optical disc** or from your **HDD**.

If you want to create an image from a disc, insert a CD/DVD/Blu-ray disc into your optical drive. Select this drive in the **Drive Selection Dropdown List** if you have several drives in your system. The disc inserted into the drive will be automatically detected and opened.

If you want to create an image from HDD, click the **Add Files...** button to open the Select Files/Folders window and add files to the **Files and Folders Area**.

3. Have a look at the Disc Size Meter to make sure all the data fits to the inserted disc.
4. Click the **Start Creating ISO!** button to open the window that will let you select the output folder for your disc image and give it a certain name. After clicking the **Save** button the image creation process will begin.

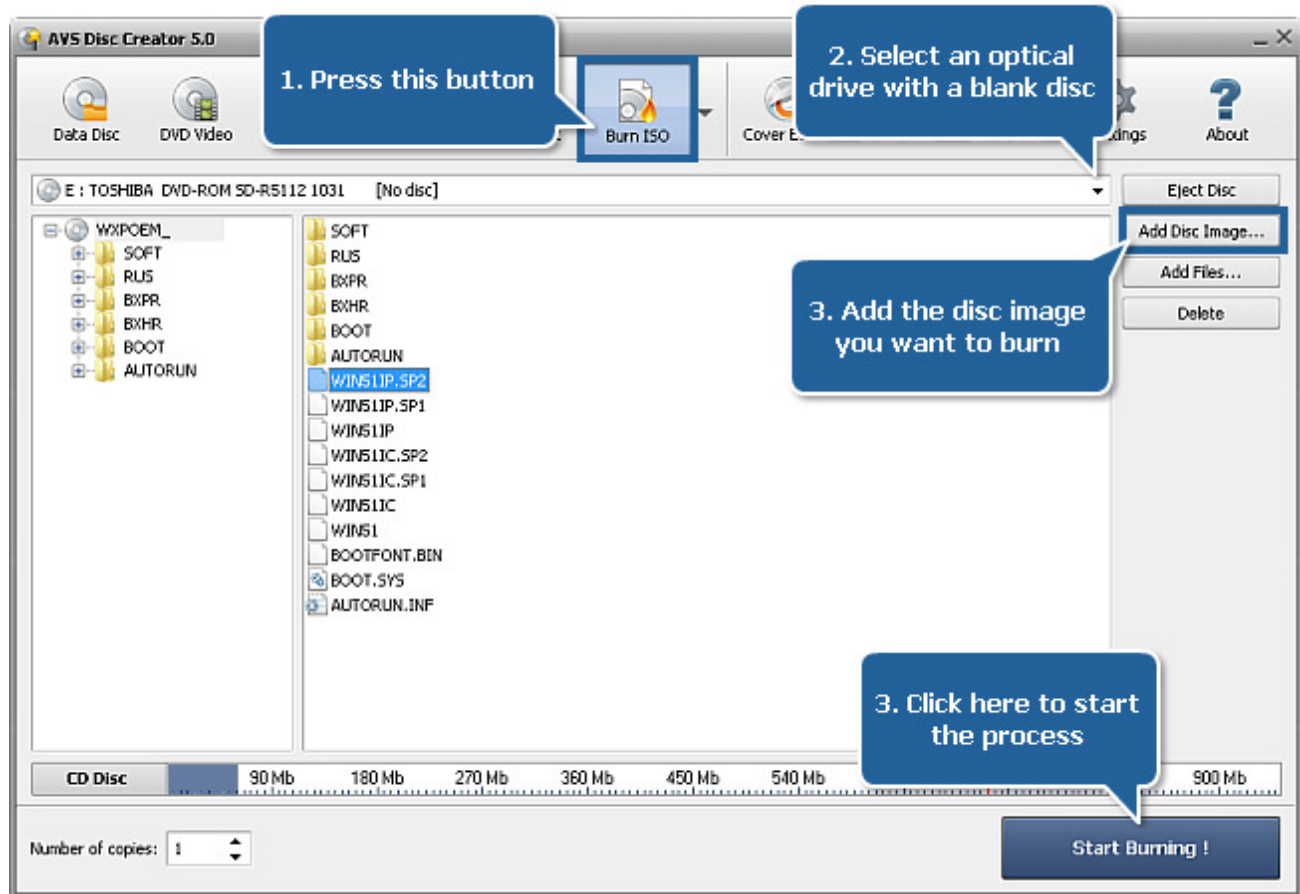


Note: if you want to create an ISO image from a multisessional audio disc, use the **Copy Disc** task. Otherwise the ISO image will be created from the first session only.

Burn ISO



Use the **Burn ISO** button to burn previously created disc images to CD, DVD, Blu-ray. **AVS Disc Creator** supports a variety of **disc image formats**.



To burn a disc image to a disc proceed through the following easy steps:

1. Press the **Burn ISO** button on the Main Toolbar.
2. Insert a blank CD/DVD/Blu-ray disc into your optical drive. Select this drive in the **Drive Selection Dropdown List** if you have several drives in your system. The disc inserted into the drive will be automatically detected and opened.
3. Click the **Add Disc Image...** button to open the Select Files/Folders window and add an image to the **Files and Folders Area** for burning.

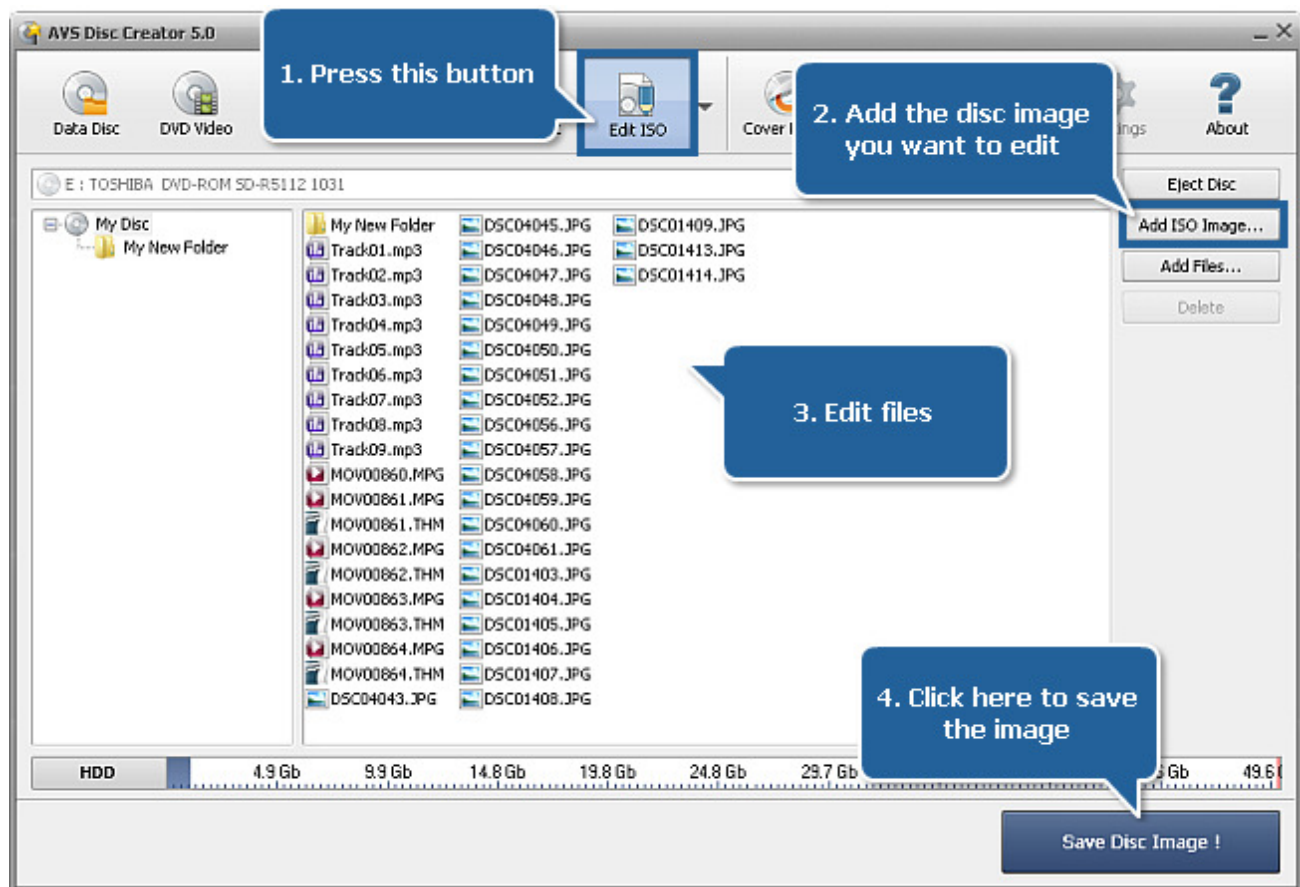
You can also add some more files for burning pressing the **Add Files...** button.

4. Have a look at the Disc Size Meter to make sure all the data fits to the inserted disc.
5. Click the **Settings** button to view and adjust the burning settings.
6. Select the number of disc copies, which you would like to create, in the **Number of Copies** field.
7. Click the **Start Burning!** button to review burning settings and launch the process.

Edit ISO



Use the **Edit ISO** button to delete unnecessary files, create and rename folders or add new files to the disc image that was already created prior to recording it onto a CD, DVD or BD. You can burn this image onto a disc later if you would like to using **AVS Disc Creator** or mount it to some third party virtual drive. **AVS Disc Creator** supports a variety of **disc image formats**.



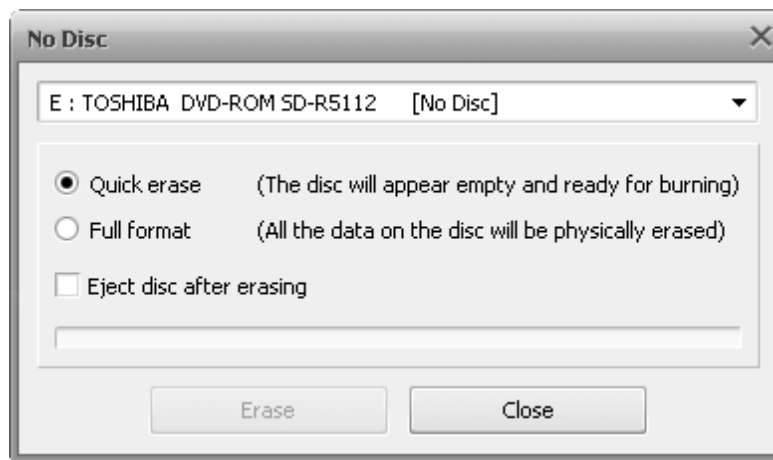
To edit a disc image proceed through the following easy steps:

1. Press the **Edit ISO** button on the Main Toolbar.
2. Click the **Add Disc Image...** button to open the Select Files/Folders window and add a disc image to the **Files and Folders Area** for editing.
3. Edit the selected disc image adding, deleting or renaming some files using the Express Menu and the **Add Files...** button.
4. Have a look at the Disc Size Meter to make sure all the data fits to the inserted disc.
5. Click the **Save Disc Image!** button to open the window that will let you select the output folder for your disc image and give it a certain name. After clicking the **Save** button the saving process will begin.

Erase Disc



If you use a rewritable disc (CD-RW, DVD-RW or BD-RE), you might need to erase it prior to recording your compilation. To do that press the **Erase Disc** button on the **Main Toolbar**. The erase window will appear to let you delete all the data from the rewritable disc:



Here there are the following options:

- **Drive** - the name of the drive you use to record your discs.
- **Erase Type** of the rewritable disc - **Quick Erase** or **Full Format**.
 - If you select the **Quick Erase** option, the data on the disc will not be actually erased as in this mode only the table of contents of the disc is deleted, the disc will appear empty and ready for burning but the data can be restored later using special software.
 - If you select the **Full Format** option, all the data on the rewritable disc will be physically erased and you will not be able to restore it later. This mode will take much more time. Use this type of erase if you have some confidential data on the disc that must be erased.

You can also enable the **Eject disc after erasing** check-box, if you do not plan to work with the disc afterwards. If you plan to use the same disc for burning after erasing, it might be useful to leave it unchecked.

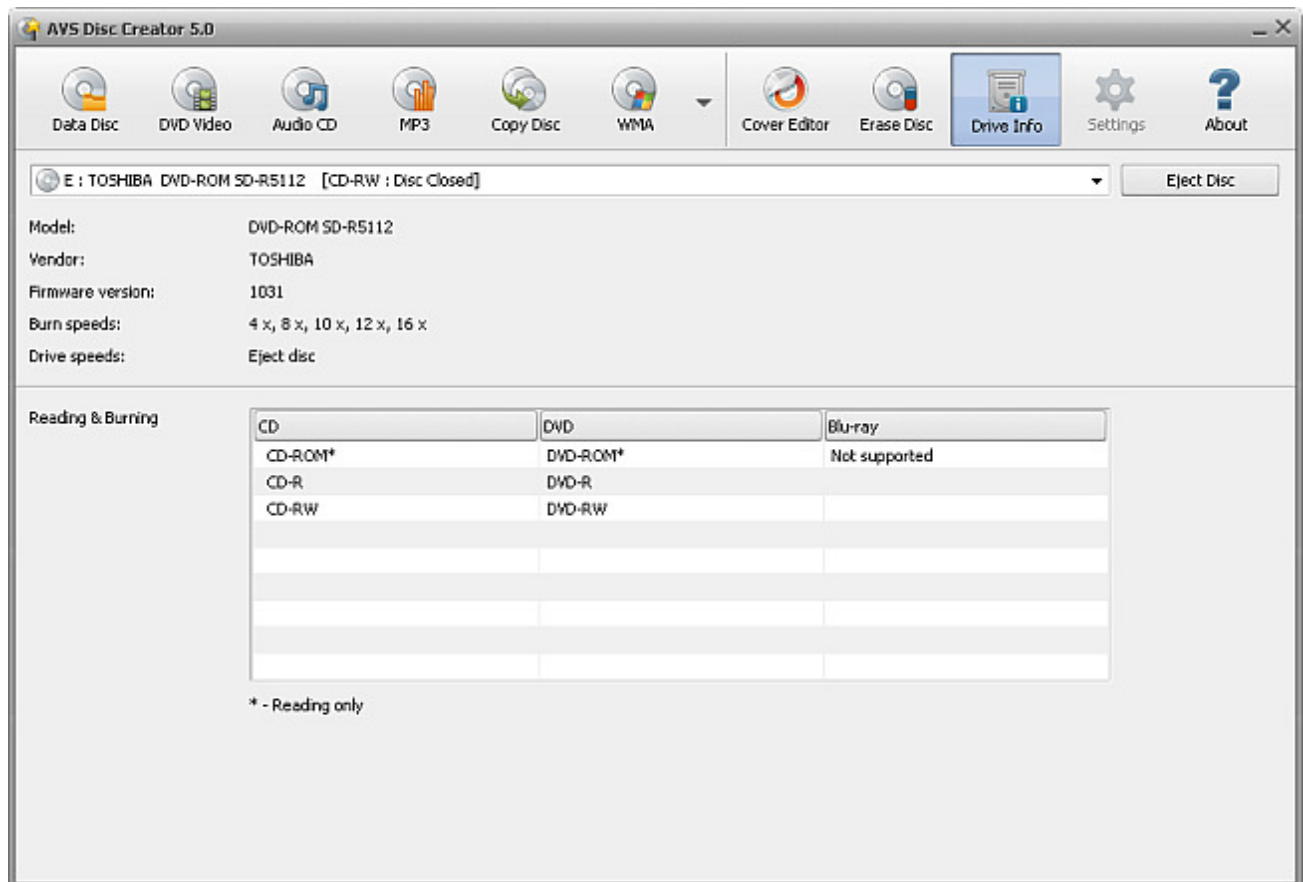
When all the erasing parameters are set, you can press the **Erase** button to start the erasing process itself. Once the erasing is started, it cannot be stopped. Please, wait for the erasing process to be finished.

Press the **Close** button to close the **Erase Disc** window.

Drive Info



Press the **Drive Info** button to view necessary details about the selected CD/DVD/Blu-ray drive and disc types it supports.



- **Drive** - in this dropdown list you should select the drive you want to get information about if you have several drives in your system
- **Model** - in this field you can see the exact model of your CD/DVD/BD drive
- **Vendor** - here you'll find the exact manufacturer's name of your drive
- **Firmware Version** - in this field the version of the program that is embedded in your drive is displayed
- **Burn Speeds** - in this field the burn speeds of the inserted disc are given
- **Drive Speeds** - in this field the supported burn speeds of your drive are listed
- **Reading & Burning** - the disc types that can be read or recorded by your drive are listed in the table. The disc types marked with an asterisk can be read only.