

# AVS4YOU Programs Help



## AVS Registry Cleaner

[www.avs4you.com](http://www.avs4you.com)

© Online Media Technologies, Ltd., UK. 2004 - 2010 All rights reserved

## Contact Us

If you have any comments, suggestions or questions regarding **AVS4YOU** programs or if you have a new feature that you feel can be added to improve our product, please feel free to contact us.

When you register your product, you may be entitled to technical support.

<b>General information:</b>	<a href="mailto:info@avs4you.com">info@avs4you.com</a>
<b>Technical support:</b>	<a href="mailto:support@avs4you.com">support@avs4you.com</a>
<b>Sales:</b>	<a href="mailto:sales@avs4you.com">sales@avs4you.com</a>
<b>Help and other documentation:</b>	<a href="mailto:help@avs4you.com">help@avs4you.com</a>

## Technical Support

**AVS4YOU** programs do not require any professional knowledge. If you experience any problem or have a question, please refer to the **AVS4YOU Programs Help**. If you cannot find the solution, please contact our support staff.



**Note:** only registered users receive technical support.

AVS4YOU staff provides several forms of automated customer support:

- **AVS4YOU Support System**

You can use the **Support Form** on our site to ask your questions.

- **E-mail Support**

You can also submit your technical questions and problems via e-mail to [support@avs4you.com](mailto:support@avs4you.com).



**Note:** for more effective and quick resolving of the difficulties we will need the following information:

- Name and e-mail address used for registration
- System parameters (CPU, hard drive space available, etc.)
- Operating System
- The information about the capture, video or audio devices, disc drives connected to your computer (manufacturer and model)
- Detailed step by step describing of your action

Please do **NOT** attach any other files to your e-mail message unless specifically requested by AVS4YOU.com support staff.

## Resources

Documentation for your AVS4YOU software is available in a variety of formats:

### In-product (.chm-file) and Online Help

To reduce the size of the downloaded software installation files the in-product help was excluded from the installation although you can always download it from our web-site for your convenience. Please, visit AVS4YOU web-site at <http://onlinehelp.avs4you.com/index.aspx> to download the latest available version of the help executable, run it and install into the AVS4YOU programs folder. After that you will be able to use it through the **Help** menu of the installed AVS4YOU software.

**Online Help** include all the content from the In-product help file and updates and links to additional instructional content available on the web. You can find the **Online Help** at our web-site - <http://onlinehelp.avs4you.com/index.aspx>. Please note, that the most complete and up-to-date version of AVS4YOU programs help is always on the web.

### PDF Documentation

The offline help is also available as a pdf-file that is optimized for printing. All PDF help files are available for download at the programs pages at AVS4YOU web-site (both <http://www.avs4you.com/index.aspx> and <http://onlinehelp.avs4you.com/index.aspx>). To be able to read and print AVS4YOU PDF help files you will need to have a PDF reading program installed.

### User Guides

You have access to a wide variety of resources that help you make the most of your AVS4YOU software. The step-by-step user guides will be of help not only to the novice users but also to the users that face a certain task to be performed and look for a way to do it. Please, visit our **User Guides** section of AVS4YOU web-site at <http://www.avs4you.com/Guides/index.aspx> to read the detailed instructions for various software and tasks

### Technical Support

Visit the **AVS4YOU Support** web-site at <http://support.avs4you.com> to ask your questions concerning AVS4YOU software installation, registration and use. Feel free to also use our e-mail address [support@avs4you.com](mailto:support@avs4you.com).

### Downloads

Visit the **Downloads** section - <http://www.avs4you.com/downloads.aspx> - of our web-site to find free updates, tryouts, and other useful software. We constantly update the software, new versions of the most popular programs and new software are also frequently released.

# Overview

**AVS Registry Cleaner** is a special utility that lets the user scan, clean and fix the Windows registry, remove obsolete, harmful or unused items from the registry and make the personal computer operate safe and fast.

## Using AVS Registry Cleaner

**you can quickly and easily perform the following tasks:**

- Scan different registry categories like uninstalled entries, shared DLL's, COM/ActiveX, file extensions, etc.
- Remove incorrect data that slow down your computer.
- Detect and delete temporary Internet files, corrupted applications, trash files in the recycle bin, etc.
- Make a backup of the files for maximum safety, restore them later if needed.
- Automatically scan your computer using the scheduler option and select file categories for scanning.

To start **AVS Registry Cleaner** go to **Start** menu and choose **All Programs -> AVS4YOU -> System Utilities -> AVS Registry Cleaner**.

# Introduction to the Registry

The registry is a system-defined database in which applications and system components store and retrieve configuration data, information and settings for all the hardware, operating system software, most non-operating system software, users, preferences of the personal computer, etc. The data stored in the registry varies according to the version of Windows used.



**Note:** in the latest Windows versions - Windows XP, Windows Vista and Windows 7 - the registry does not physically exist as a single file, it is a virtual entity composed of different files in the system, some of which are created during the system boot and exist only during the Windows user session and are deleted once the computer is shut down.

If there is an error in the registry, your system may not function properly. **AVS Registry Cleaner** helps you scan your registry for some possible problems and try and fix them to improve the overall computer performance.



**Note:** most of the registry changes in Windows versions require a user to have **Administrator** permissions to perform them; in Windows Vista and Windows 7 you will additionally need to run the program as administrator to get the full access to all the program features.



**Note:** it is not recommended to edit the registry data unless it is absolutely necessary, that is your computer experiences slow performance issues, some programs behave inadequately and so on. Please make sure you create a **backup** each time you scan and fix some registry problems.

The registry contains the following root hives:

- **HKEY\_CLASSES\_ROOT (HKCR)** - stores information about the system registered applications, such as file extensions tying them to the applications used to handle these extensions. In fact this hive combines data from the **HKLM \Software\Classes** and **HKEY\_USERS\Current\_User's\_SID\Classes** registry sections.
- **HKEY\_CURRENT\_USER (HKCU)** - stores settings that are specific to the currently logged-in user.
- **HKEY\_LOCAL\_MACHINE (HKLM)** - stores settings that are general to all users on the computer - information about system hardware drivers, services, software and Windows settings.

- **HKEY\_USERS (HKU)** - contains subkeys corresponding to the `HKEY_CURRENT_USER` keys for each user profile actively loaded on the machine, though user hives are usually only loaded for currently logged-in users.
- **HKEY\_CURRENT\_CONFIG** - contains information gathered at runtime; information stored in this key is not permanently stored on disk, but rather regenerated at the boot time.

Below is the list of registry sections, which are scanned by **AVS Registry Cleaner**:

- **COM/ActiveX** - registry section in which the COM-servers used by various applications are registered (in-process servers (.dll files) or out-of-process servers (.exe files)). The program scans for the .dll or .exe links in the registry that point to the nonexistent files on the computer hard disk drive. A COM-server can also link to a type library (usually a .tlb-file) that does not exist. In case the *DefaultIcon* registry subkey is present in the category, the program will also scan for the presence or absence of the file containing the file icons. The registry hives scanned by **AVS Registry Cleaner** are:
  - HKLM\Software\Classes
  - HKU\Classes
- **Application Paths** - registry section used to store the full paths to the applications launched using the **Run** window or command prompt. The program scans for the nonexistent paths to the applications and deletes the entries if these files could not be found. The registry hive scanned by **AVS Registry Cleaner** is:
  - HKLM\Software\Microsoft\Windows\CurrentVersion\App Paths\
- **Uninstall Entries** - registry section used for programs installation/deinstallation paths entries. The program scans for the nonexistent paths to the applications installer/uninstaller files and deletes the entries if these files could not be found. The registry hives scanned by **AVS Registry Cleaner** are:
  - HKLM\Software\Microsoft\Windows\CurrentVersion\Uninstall\
  - HKU\Software\Microsoft\Windows\CurrentVersion\Uninstall\
- **File Extensions** - registry section used to store the full paths to the applications, file icons and additional commands associated with the file extensions. The program scans for the nonexistent paths to the applications and deletes the entries if these files could not be found. The registry hives scanned by **AVS Registry Cleaner** are:
  - HKLM\Software\Classes
  - HKU\Classes
- **Windows Fonts** - registry section used to store the full paths to the Windows fonts or the font file name (in this case the font file must be present in the \Windows\Fonts\ directory). The program scans for the nonexistent paths to the font files and deletes the entries if these files could not be found. The registry hive scanned by **AVS Registry Cleaner** is:
  - HKLM\Software\Microsoft\Windows NT\CurrentVersion\Fonts
- **Help Files** - registry section used to store the full paths to the Windows programs helps. The program scans for the nonexistent paths to the helps files and deletes the entries if these files could not be found. The registry hives scanned by **AVS Registry Cleaner** are:
  - HKLM\Software\Microsoft\Windows\Help
  - HKLM\Software\Microsoft\Windows\HTML Help
- **Internet Explorer typed URLs** - registry section used to store the history of the URL-addresses typed in the Internet Explorer address bar. The program scans for the presence of these entries. The registry hive scanned by **AVS Registry Cleaner** is:
  - HKU\Software\Microsoft\Internet Explorer\TypedURLs
- **Explorer MRU\* list** - registry section used to store the history of the entered **Run** window commands, recent documents list, last visited pages and opened and saved files. The program scans for the presence of these entries. The registry hives scanned by **AVS Registry Cleaner** are:
  - HKU\Software\Microsoft\Windows\CurrentVersion\Explorer\RunMRU
  - HKU\Software\Microsoft\Windows\CurrentVersion\Explorer\RecentDocs
  - HKU\Software\Microsoft\Windows\CurrentVersion\Explorer\ComDlg32\LastVisitedMRU

- HKU\Software\Microsoft\Windows\CurrentVersion\Explorer\ComDlg32\OpenSaveMRU
- **Search Assistant MRU\* list** - registry section used to store the history of the entered **Search** window commands. The program scans for the presence of these entries. The registry hives scanned by **AVS Registry Cleaner** are:
  - HKU\Software\Microsoft\Search Assistant\ACMrU\5001
  - HKU\Software\Microsoft\Search Assistant\ACMrU\5603
  - HKU\Software\Microsoft\Search Assistant\ACMrU\5004
  - HKU\Software\Microsoft\Search Assistant\ACMrU\5647
- **Media MRU\* list** - registry section used to store the history of the latest media files played by the Windows Media Player. The program scans for the presence of these entries. The registry hives scanned by **AVS Registry Cleaner** are:
  - HKU\Software\Microsoft\MediaPlayer\Radio\MRUList
  - HKU\Software\Microsoft\MediaPlayer\Player\RecentURLList
  - HKU\Software\Microsoft\MediaPlayer\Player\RecentFileList
- **Shared DLLs** - registry section used to store the full paths to the library files (DLLs) that can be used by several programs. The program scans for the nonexistent paths to the files and deletes the entries if these files could not be found. The registry hive scanned by **AVS Registry Cleaner** is:
  - HKLM\Software\Microsoft\Windows\CurrentVersion\SharedDlls
- **Sounds and App Events** - registry section used to store the full paths to the Windows sound files used by various applications. The program scans for the nonexistent paths to the sound files and deletes the entries if these files could not be found. The registry hive scanned by **AVS Registry Cleaner** is:
  - HKU\AppDataEvents\Schemes\Apps\
- **Windows Startup** - registry section used to store the full paths to the applications which are executed automatically during the system startup. The program scans for the nonexistent paths to the files and deletes the entries if these files could not be found. The registry hives scanned by **AVS Registry Cleaner** are:
  - HKLM\Software\Microsoft\Windows\CurrentVersion\Run
  - HKU\Software\Microsoft\Windows\CurrentVersion\Run



**Note:** **AVS Registry Cleaner** searches not only the `HKEY_CURRENT_USER` registry hive, but also the `HKEY_USERS` that store data for all the users on the computer. Please make sure you do **backup** your windows registry before you **fix** the existing problems.





\* **MRU** - Most Recently Used

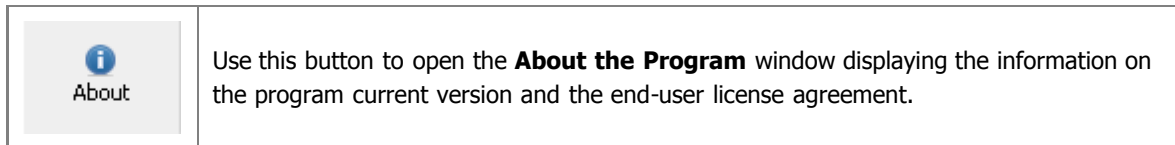
## Program Interface

**AVS Registry Cleaner** interface is quite simple to use and lets the user perform all the actions with a few mouse clicks. The program **Main Window** looks the following way:



The **Menu Pane** lets the user access all the program options and actions.

	Use this button to revert the registry to the state it was in before last cleans.
	Use this button to create both registry and system backups to restore from them later.
	Use this button to create a cleanup <b>schedule</b> so that the program could scan and fix your system automatically at the appointed time.
	Use this button to open the <b>Settings</b> window to change the program settings.



The **Status Area** lets the user see date and time when the last scanning and fixing were made and know whether scheduling is enabled or not.

The **Category/Result Area** initially contains the list of available categories to scan within. It also displays the found problems in details if the scanning has been performed.



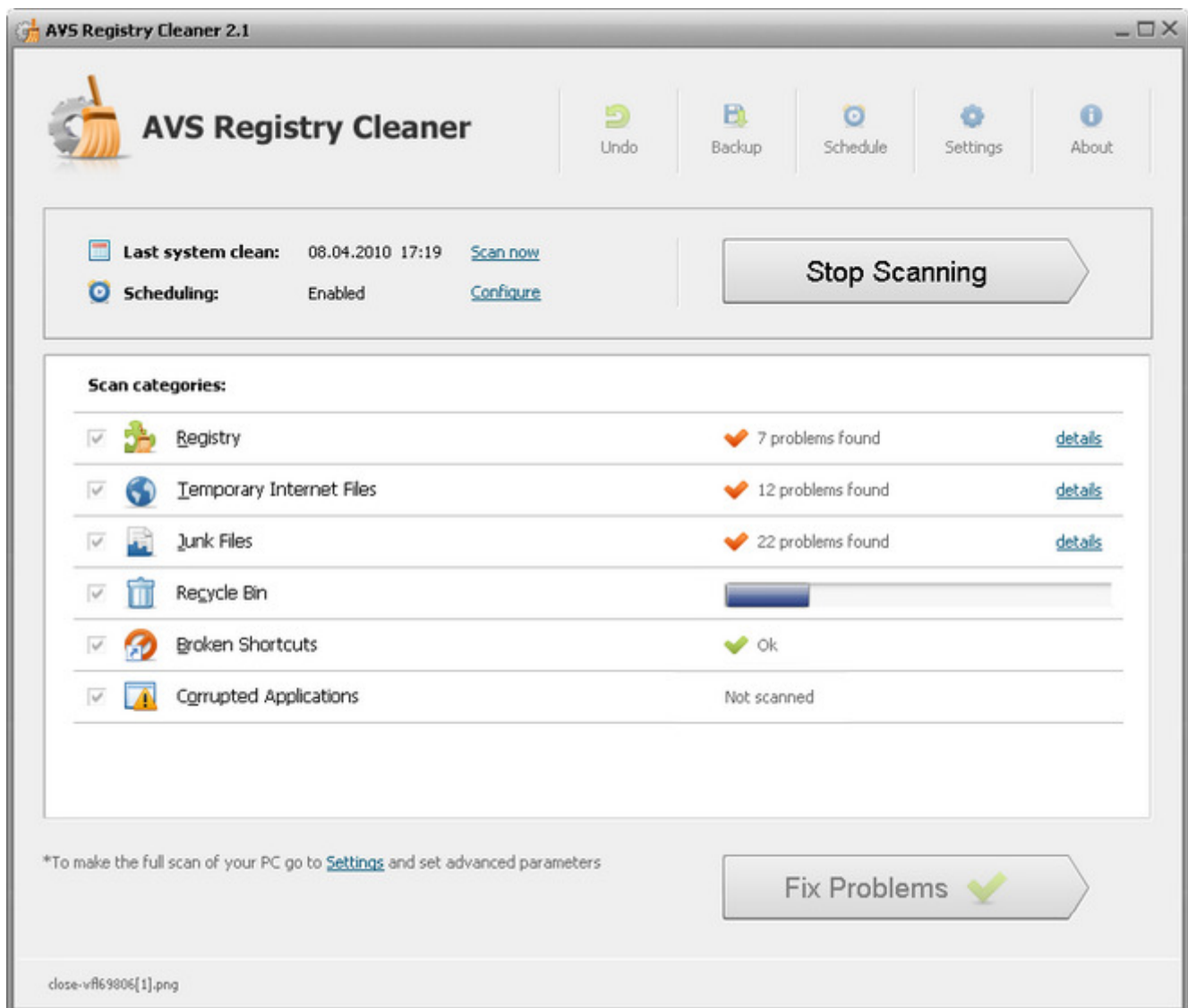
# Scanning and Fixing: Overview

The scanning is a fully automated process. This means that the program will do everything itself. But before scanning you should choose categories that will be included into the scan process. Available categories are:

- **Registry**
- **Temporary Internet Files**
- **Junk Files**
- **Recycle Bin**
- **Broken Shortcuts**
- **Corrupted Applications**

After choosing the categories to scan, click the **Start Scanning** button to initiate the scan process.

Once the scanning is over, a result of the found problems will be displayed in the **Category/Result** area. To fix the found problems, click the **Fix Problems** button:

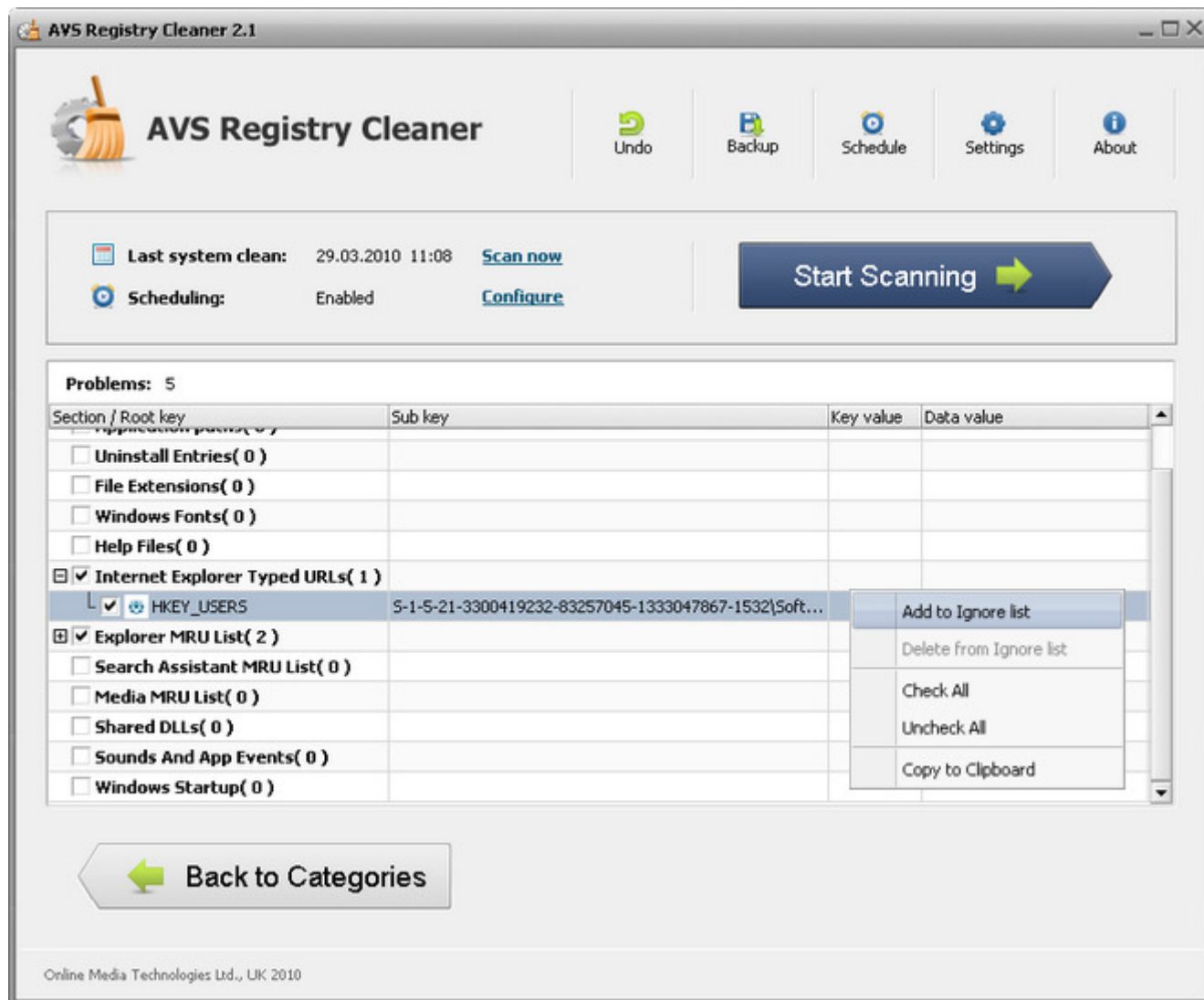


**Note:** objects currently scanned within a category are shown in the left bottom corner of the **Main Window**.

# Registry

The **Registry** category contains several sections with the predefined registry hives to scan in them.

Before fixing the discovered problems (deleting the invalid registry entries), click the **details** link to see all them in particulars:



You can uncheck the keys you don't want to be fixed with a mouse click. To select/deselect all the sections including their contents, use the right-click menu **Check All/Uncheck All** items.

To add a key to the ignore list, use the right-click menu **Add to Ignore list** item.

To delete a key from the ignore list, use the right-click menu **Delete from Ignore list** item.



**Note:** to make fixing available, click the **Back to Categories** button first.



**Note:** some of the changes made to the registry during fixing will take effect only after the system reboot.

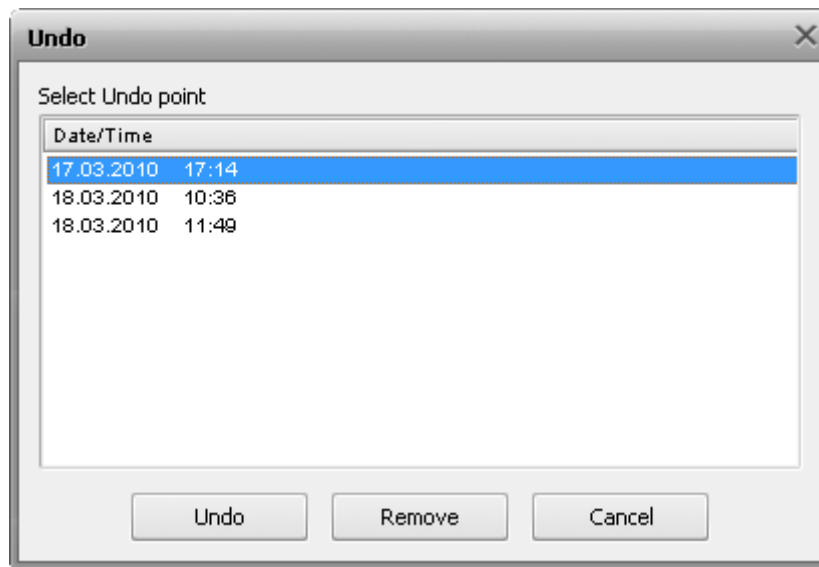


**Note:** if all the keys with problems found are in **Ignore list**, you will see the text "**Nkeys are in Ignore list**" to the right of the category name, where *N* - the number of keys.



In case you would like to revert the changes you made to the registry, click the **Undo** button on the **Menu Pane**.

The following window will appear for you to select an undo point from among the available ones:



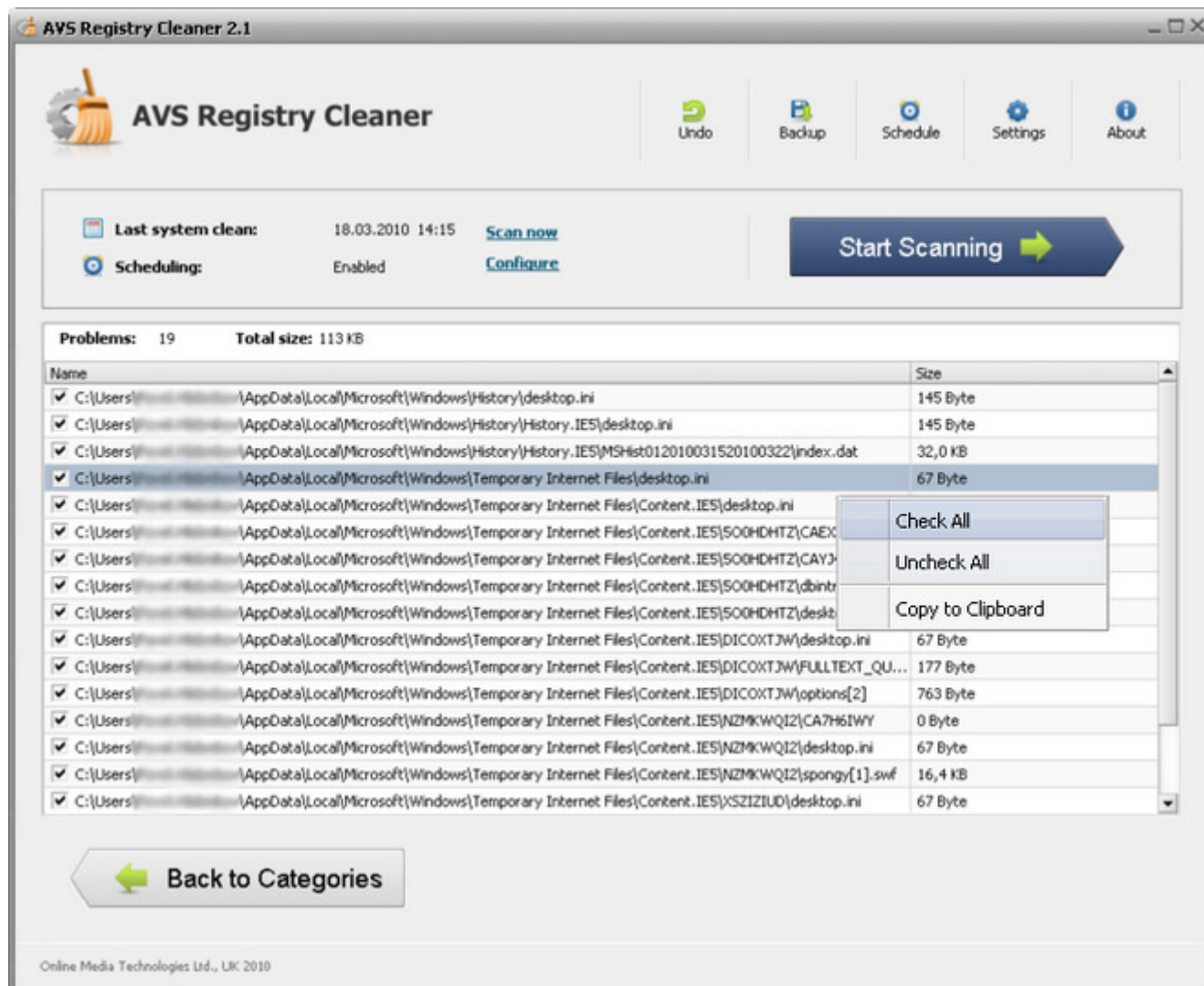
To return the registry to a certain previous state before a fixing has been applied, select an undo point then click the **Undo** button.

To delete an undo point, click the **Remove** button.

## Temporary Internet Files

The **Temporary Internet Files** category lets scan the special folders used, mainly, by the Internet Explorer browser for storing the cache of web page contents, history of visited pages and cookies.

Before fixing the discovered problems (deleting the browser temporary data), click the **details** link to see all them in particulars:



You can uncheck the problems you don't want to be fixed with a mouse click. To select/deselect all the problems, use the right-click menu **Check All/Uncheck All** items.

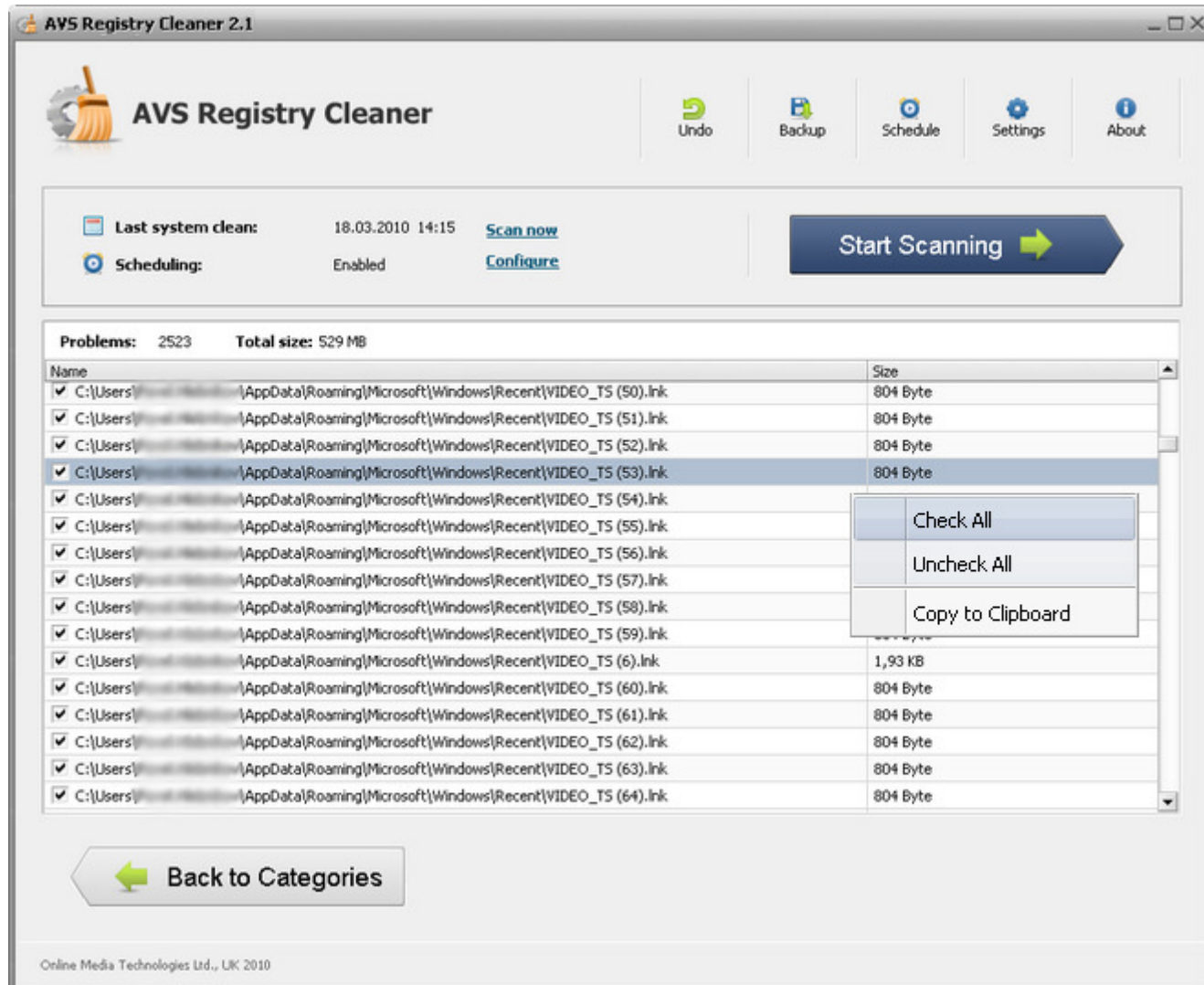


**Note:** to make fixing available, click the **Back to Categories** button first.

## Junk Files

The **Junk Files** category lets scan the special folders used by different applications and the operating system for storing their temporary data that once served auxiliary purposes and no longer needed in most cases and also find links referring to recently used programs that also may waste free disk space.

Before fixing the discovered problems (deleting the worthless files), click the **details** link to see all them in particulars:



You can uncheck the problems you don't want to be fixed with a mouse click. To select/deselect all the problems, use the right-click menu **Check All/Uncheck All** items.

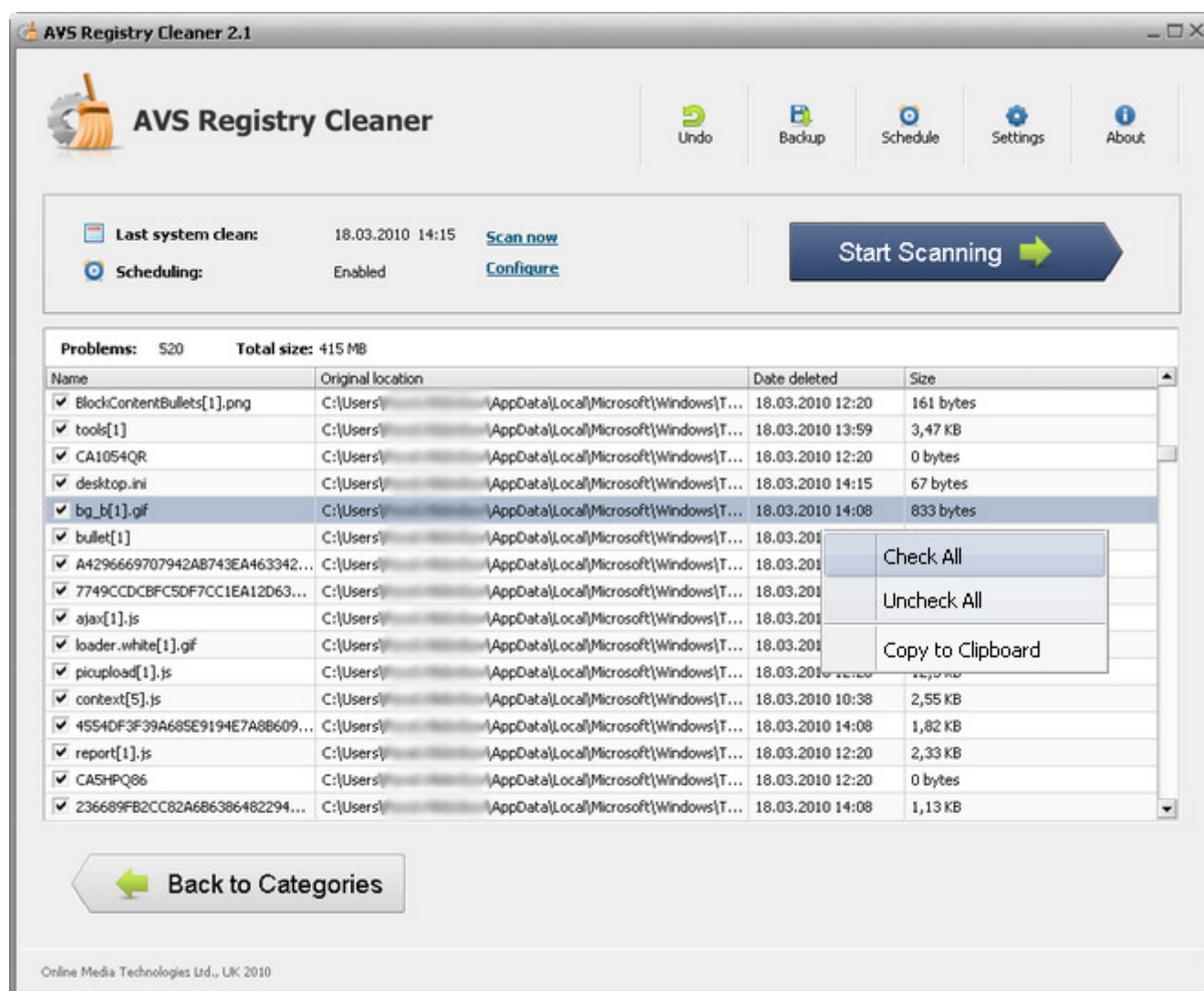


**Note:** to make fixing available, click the **Back to Categories** button first.

# Recycle Bin

The **Recycle Bin** category lets check the Recycle Bin for files, folders and shortcuts once deleted in a flash including additional information.

Before fixing the discovered problems (emptying the whole Recycle Bin), click the **details** link to see all them in particulars:



You can uncheck the files, folders or shortcuts you don't want to be removed from Recycle Bin with a mouse click. To select/deselect all the contents, use the right-click menu **Check All/Uncheck All** items.



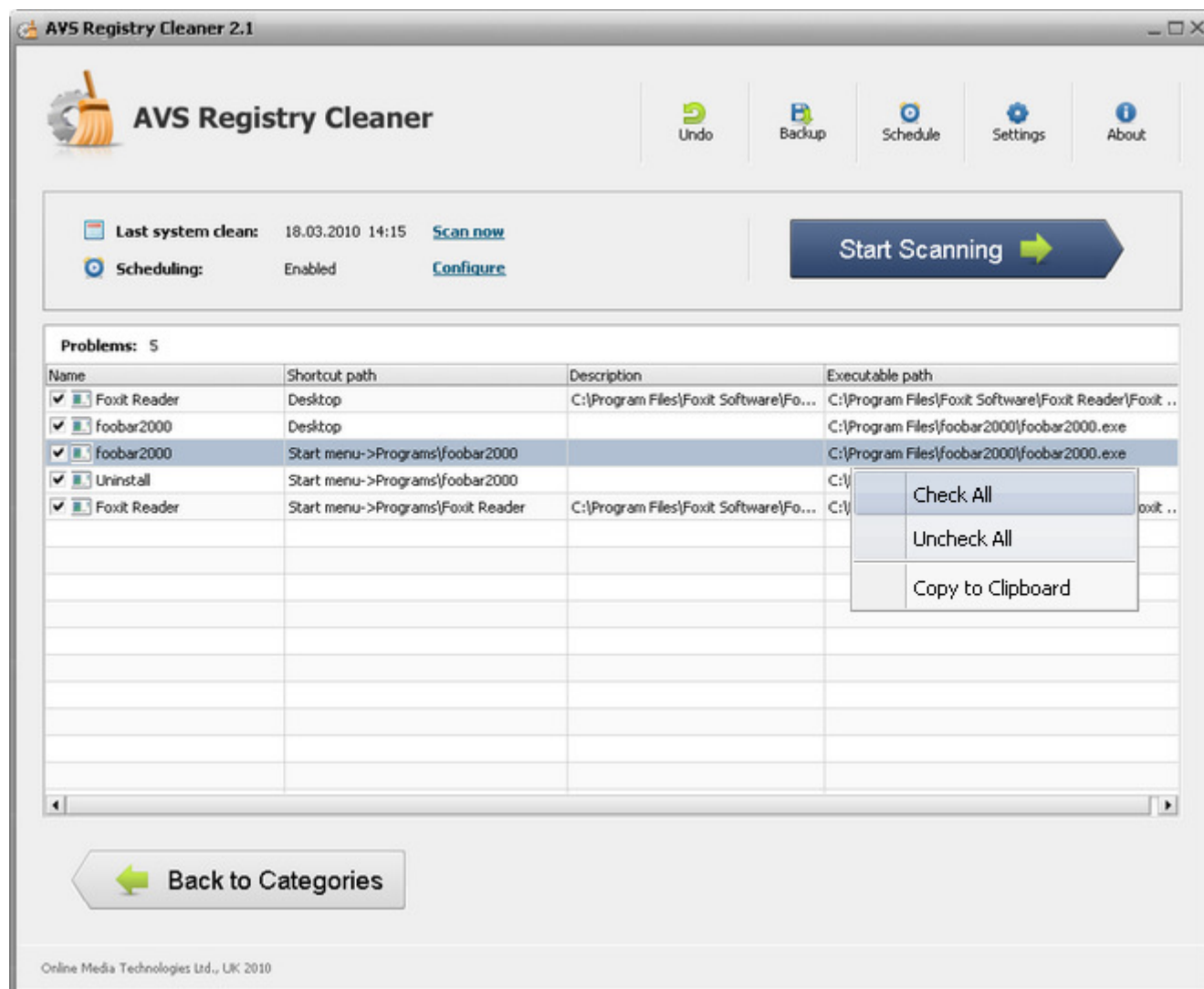
**Note:** to make fixing available, click the **Back to Categories** button first.



## Broken Shortcuts

The **Broken Shortcuts** category lets scan for shortcuts that refer to non-existent locations but still waste disk space.

Before fixing the discovered problems (deleting the worthless shortcuts), click the **details** link to see all them in particulars:



You can uncheck the problems you don't want to be fixed with a mouse click. To select/deselect all the problems, use the right-click menu **Check All/Uncheck All** items.

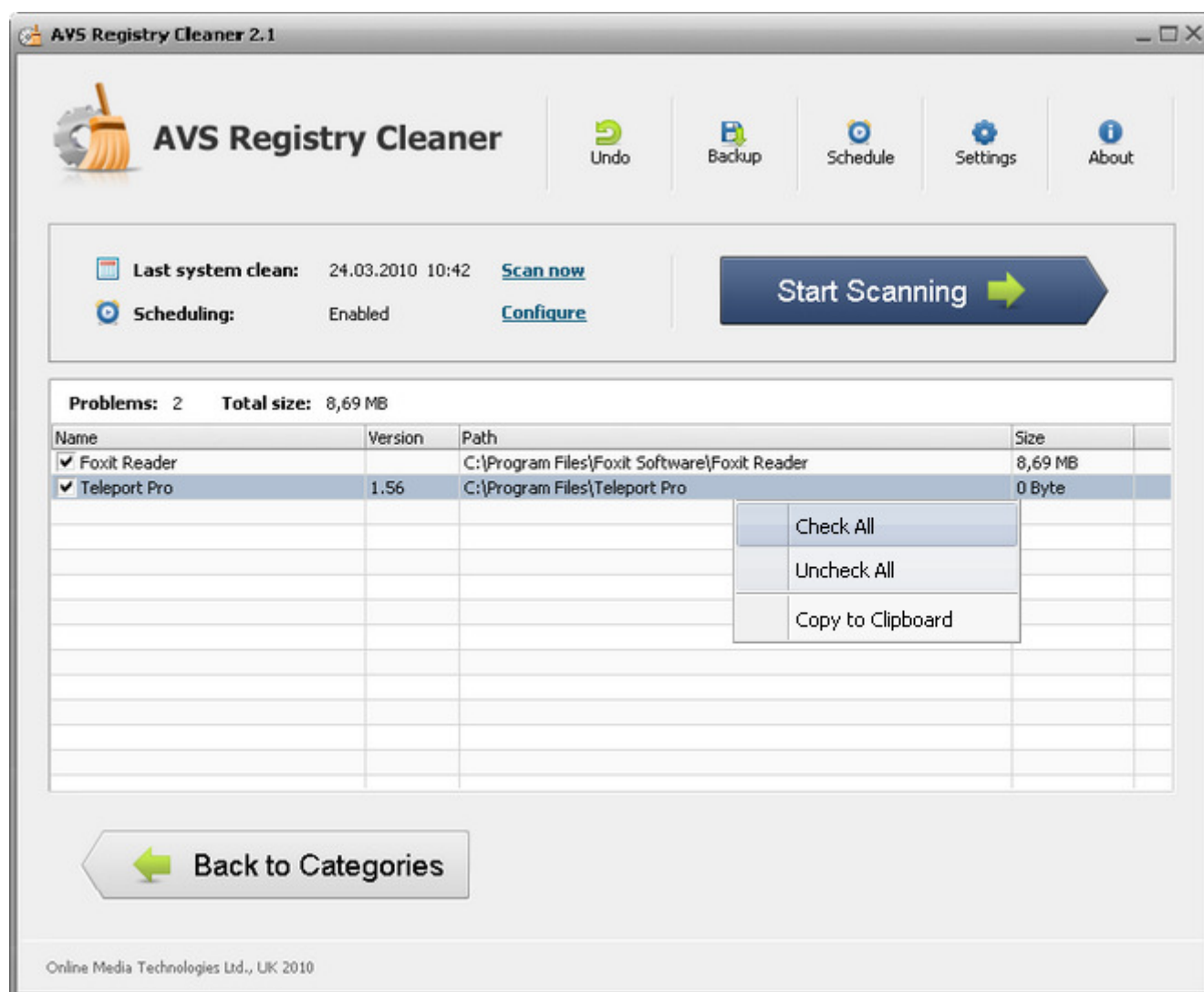


**Note:** to make fixing available, click the **Back to Categories** button first.

# Corrupted Applications

The **Corrupted Applications** category lets scan for programs, once properly installed, that have lost their integrity somehow.

Before fixing the discovered problems (uninstalling the corrupted programs correctly), click the **details** link to see all them in particulars:



You can uncheck the problems you don't want to be fixed with a mouse click. To select/deselect all the problems, use the right-click menu **Check All/Uncheck All** items.



**Note:** to make fixing available, click the **Back to Categories** button first.



**Note:** depending on a reason of broken integrity, **AVS Registry Cleaner** may delete only some components and registry entries correctly but won't uninstall the whole program. In any case the application name will be removed from the list of programs installed on you computer.

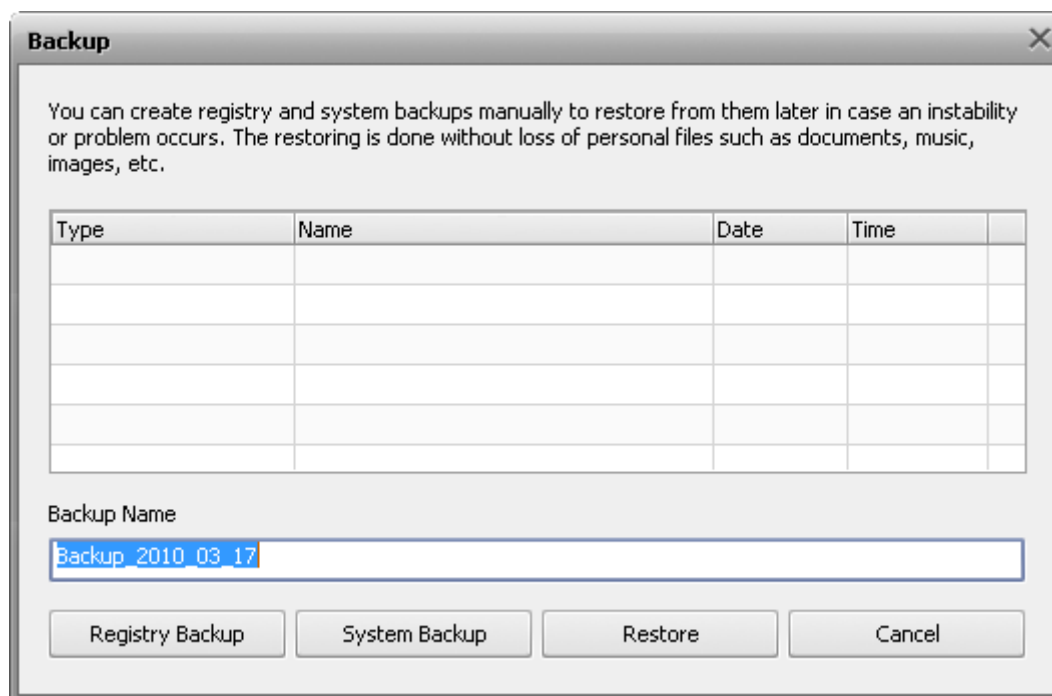


## Creating Backup and Using the Restoring: Overview



Regular backups will prevent your system and its registry from data loss and will let you return to the saved state whenever needed.

To create a backup, click the **Backup** button on the **Menu Pane**, the following window will appear:



You can create two types of backups through the **Backup** window:

- **Registry Backup**
- **System Backup**

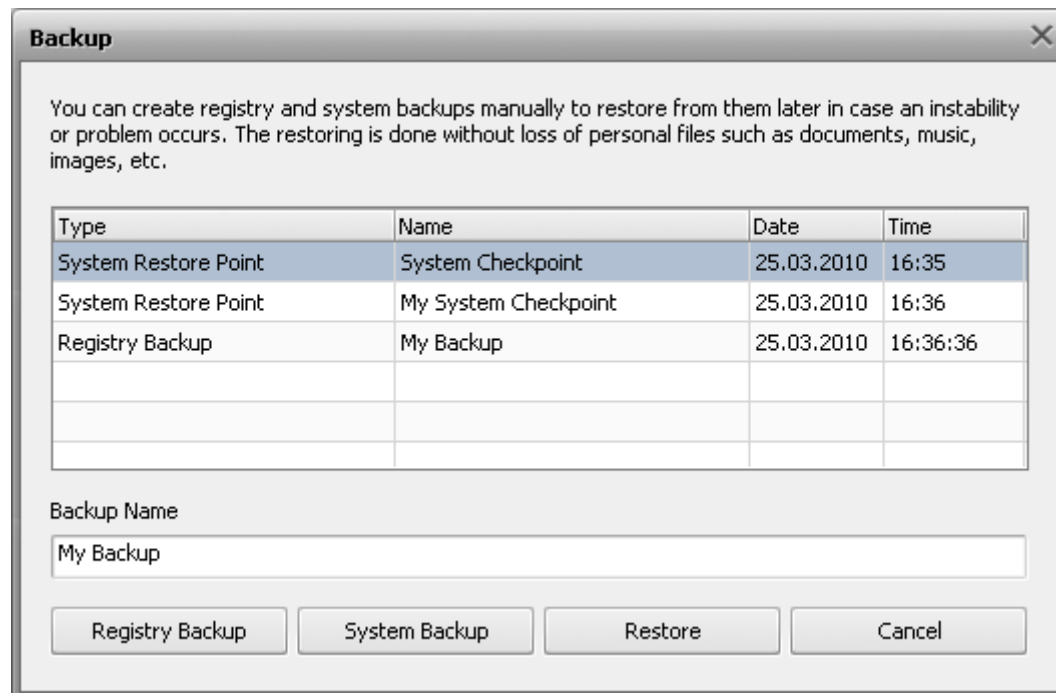


**Note:** when you launch **AVS Registry Cleaner** for the first time you will be offered to make the system backup at once. The system backup under the name "AVS Registry Cleaner First Launch" will be created if you accept to do that.

# Registry Backup

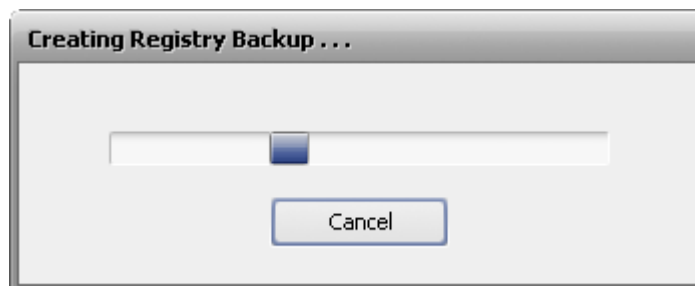
The registry backup lets create the backup copy of the registry in whole.

To create a registry backup, click the **Registry Backup** button:

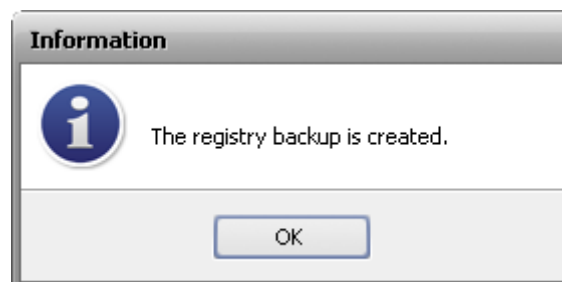


**Note:** you can specify your backup name in case the default name on the current date seems to be uninformative for you.

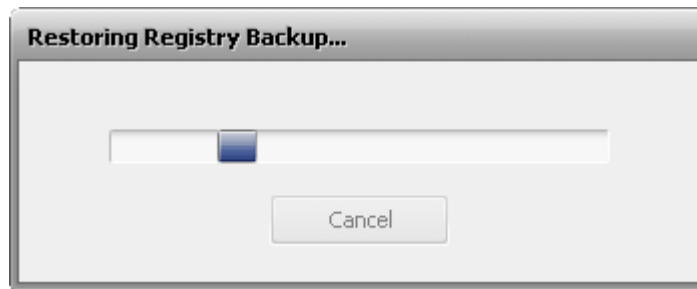
The registry backup process will start. It takes some time to complete:



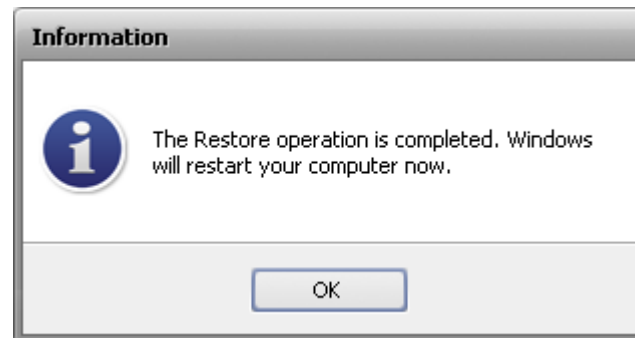
When the registry backup is completed the message box informing of the successful completion will appear:



To restore from a registry backup, select it in the table and then click **Restore**. The restore process takes some time to complete:



When the registry restore process is completed your computer will be restarted for rollback to take effect:

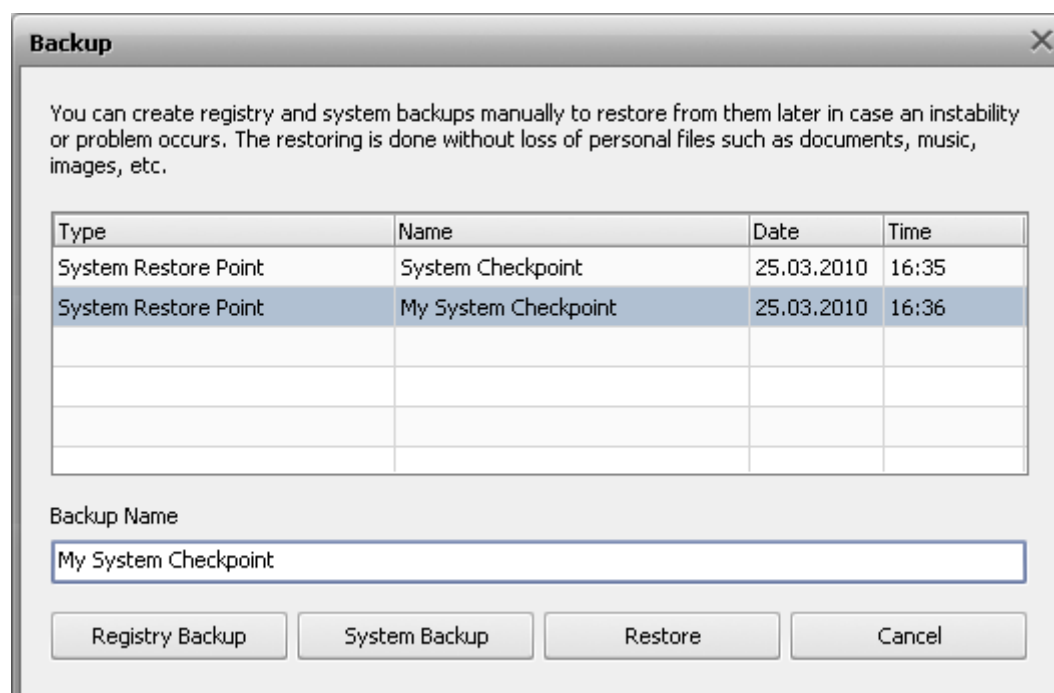


To delete a registry backup, select it then click the **Delete** item from the right-click menu.

## System Backup

**i Note:** the **System Backup** requires the Windows System Restore feature enabled. Please, make sure it is enabled otherwise creating the registry backup will be available only: **Start -> Control Panel -> System -> System Protection** and select disks on which system restore points should be created. Make sure you use the **Classic View** for the **Control Panel** to see the **System** icon.

To create a system backup, click the **System Backup** button:



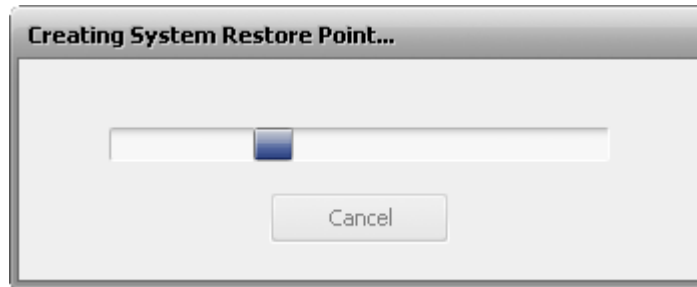


**Note:** you can specify your backup name in case the default name on the current date seems to be uninformative for you.

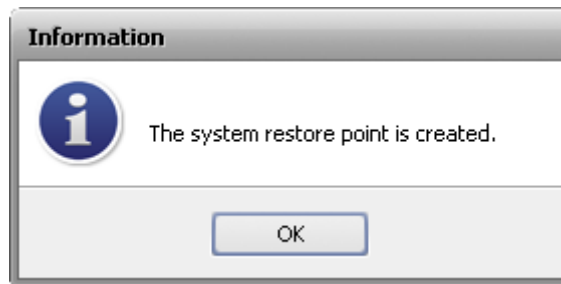


**Note:** you might see some system restore points listed although you did not create them before, those are points created by Windows.

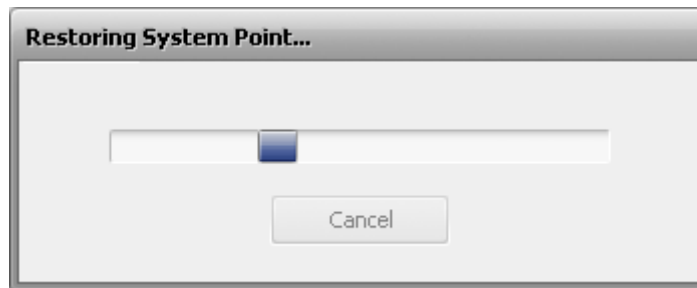
The system backup process will start. It takes some time to complete:



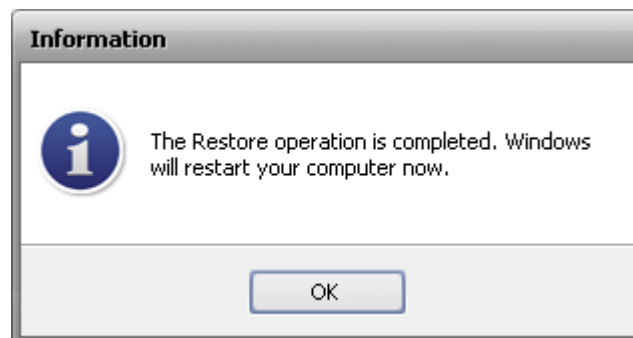
When the system backup is completed the message box informing of the successful completion will appear:



To restore from a system backup, select it in the table and then click **Restore**. The restore process takes some time to complete:



When the system restore process is completed, your computer will be restarted for rollback to take effect:



**Note:** you can not delete the system backups, use the operating system options to do that.

# Types of Files

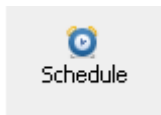
Files with the following extensions are included into a system backup:

~~C	~~D	12A	1PA	1ST	386	8BA
8BY	8LI	A2A	AAS	AAX	ABM	ABR
ACF	ACG	ACO	ACS	ADK	ADW	ADX
AFM	AID	AIP	ALT	AM	AMB	APL
APM	APP	APV	AR	ARX	AS	AT
ATC	ATL	ATM	ATN	AW	AWE	AWX
AX	B0	BAT	BCF	BD	BDR	BE
BGB	BGR	BID	BIT	BK1	BLD	BM
BMA	BND	BNF	BOF	BPP	BPT	BPX
BT	BTN	BUC	CAG	CAO	CAT	CBS
CC	CF	CFG	CHA	CIK	CL	CLW
CLX	CLY	CMD	CNT	CNV	COL	COM
CPB	CPL	CQM	CR	CRL	CRS	CRV
CS	CSB	CSI	CSL	CSW	CTB	CTG
CTY	CUS	CW_	D01	D02	D03	D04
D05	D32	DATA	DB0	DB1	DB2	DC2
DCA	DCF	DCI	DCL	DDB	DDD	DEP
DES	DESLINK	DET	DGM	DIALOG	DID	DIR
DISABLED	DIX	DLL	DOB	DOS	DRC	DRS
DRV	DS	DSC	DSK	DSN	DSR	DSX
DT	DTT	DUN	DVB	DWT	DXT	DYNCMD
ECF	EFF	EFM	EID	EL	ELM	END
ENU	ENV	EOT	EPF	ET	EX_	EXA
EXCLUDE	EXE	EXL	F32	FAE	FAM	FAS
FFP	FIN	FIO	FLL	FLW	FMC	FMP
FNT	FON	FSG	FSS	GCS	GDB	GI_
GMS	GNG	GPD	GS	GSF	GST	GUIATN
GUICMD	GVT	GWD	H16	HCT	HDC	HDI

HDP	HFX	HGD	HHC	HHK	HK0	HK1
HK2	HK3	HLP	HM	HTA	HTC	HTZ
HU	HWL	HYP	IAT	IBD	ICD	ICM
ICO	ICR	ICW	ID	IDS	IFA	ILF
ILG	ILM	IN_	INCL	INF	INI	INK
INL	INO	INS	INV	IP	IRS	ISA
ISS	ISU	ITF	J0	JA	JBR	JCM
JGD	K01	K03	KBD	KNN	KO	L0
L2L	L2P	LAB	LAM	LAST	LCA	LCK
LDA	LEX	LGC	LGD	LGE	LGF	LIC
LID	LIM	LIVEREG	LLI	LMC	LMG	LMP
LNK	LO~	LRD	LRS	LSM	LSO	LSQ
LSS	LSX	LT	LTS	LV	M20	MANIFEST
MAPIMAIL	MC	MCD	MCM	MD2	MDM	MDP
ME	MFL	MHK	MIL	MLN	MMC	MMM
MMX	MNC	MNL	MNR	MNS	MOF	MOR
MP	MPD	MPT	MSB	MSC	MSE	MSI
MST	MSK	MSO	MXT	MYDOCS	N0	NAM
NAME	NDX	NEW	NFO	NIB	NMD	NOD
NPM	NQM	NQV	NSI	NSW	NTE	NU4
NUM	NUS	NV	OBE	OCM	OCX	ODE
ODL	OLB	OLD	OLE	OP	OPG	OR5
OSD	OUT	P2A	PAG	PBC	PBK	PBV
PC3	PCI	PDI	PDR	PEN	PER	PFB
PFM	PFR	PH	PHO	PHX	PID	PIF
PL3	PLY	PMT	PNF	POC	POF	POL
PPD	PR4	PROPERTIES	PRX	PSC	PSF	PSP
PT	PTH	PTX	PV	Q0	Q32	Q3X
QDAT	QJF	QRS	QTC	QTD	QTW	QUE
QUF	QUT	R0	R98	RAD	RAT	RC2
RCP	RCT	RDB	RDC	REF	REG	RGS

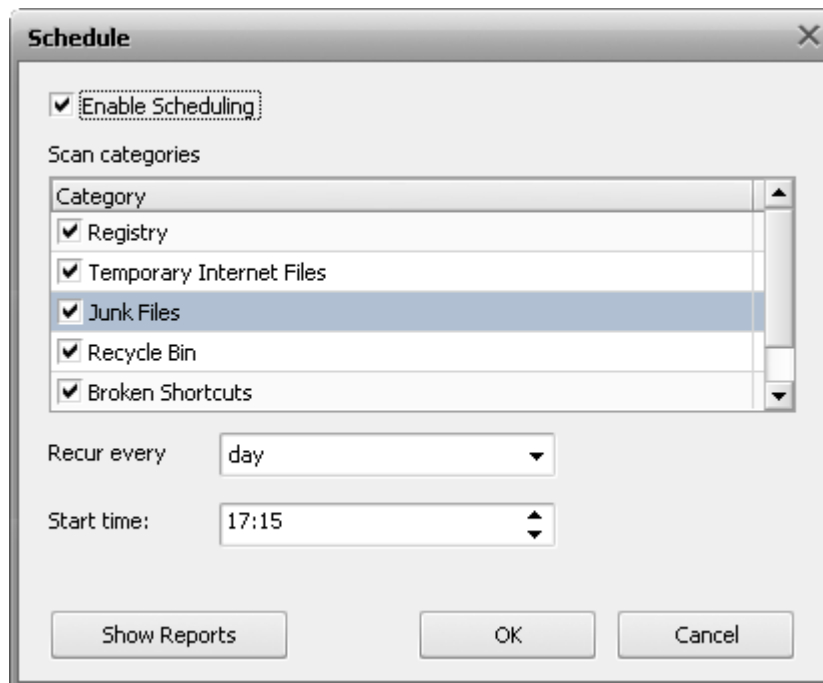
RH	RI	RJS	RO	ROB	RPR	RPS
RSD	RSP	RSRC	RTA	RTR	RU	S98
SAM	SAX	SCK	SCR	SCS	SECURITY	SELFREG
SFP	SG	SG0	SG1	SHARED	SHR	SHX
SIF	SK	SLL	SMC	SMM	SNP	SOF
SPC	SPE	SPM	SPT	SPX	SR	SRC
SRG	SRT	SSM	SST	ST4	STB	STD
STF	STP	SWB	SYM	SYN	SYS	T32
TAG	TB	TDF	TH	THE	THK	THS
TID	TIE	TIP	TLB	TLD	TLF	TLT
TLU	TLX	TMC	TNL	TOL	TPA	TR
TRE	TRG	TRO	TSK	TSP	TTF	TTS
TUB	TUM	TUW	TV	TVC	TWD	TXR
TYM	TZD	UBM	UCM	UCP	UCT	UDC
UDI	UDL	UDT	UID	UIL	UK	ULG
ULK	UNT	US	USA	USERPROFILE	USP	USR
UTX	V10	VBS	VBX	VBZ	VCPREF	VDB
VER	VFM	VFX	VIL	VLX	VM	VOF
VPH	VPX	VQA	VQM	VSC	VSH	VWP
VXD	W32	W98	WA_	WBD	WBM	WCD
WDL	WDS	WINSYS	WIPEINFO	WIPESLACK	WMZ	WPC
WPX	WRF	WSL	WTB	WTR	XLL	XXM
XRS	XTU	ZFSENDTOTARGET	ZH	ZH_TW	ZRW	

## Using the Scheduling



If you want to automate the work of **AVS Registry Cleaner** and let it perform cleaning on chosen categories once, say, a week and at a certain time, you should use the **Schedule** feature.

To use the **Schedule** feature, click the **Schedule** button on the **Menu Pane** and check the **Enable Scheduling** option in the window that appears:



- **Scan categories** - use this option to check the categories that should be included into the clean on schedule.
- **Recur every** - use this option to set how often the clean on schedule should be performed.
- **Start time** - use this option to set an exact time (hours:minutes:seconds) when the clean on schedule should start.

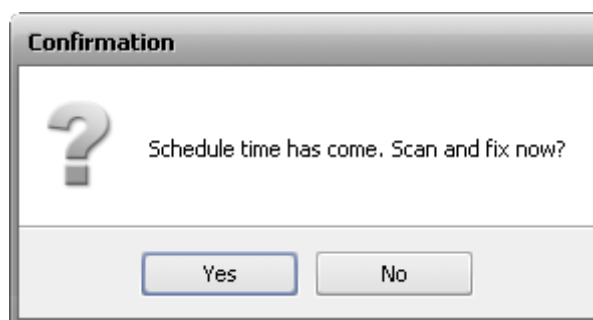
To open the folder containing reports (files with the *.mht* extension ) made on the results of the scheduled cleans, click the **Show Reports** button.



**Note:** if the folder is empty, the **Show Reports** button is disabled.

To apply changes, click the **OK**. To discard changes, click **Cancel**.

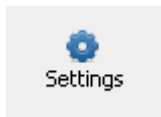
If the scheduled time has come and **AVS Registry Cleaner** is launched, the window appears asking you to confirm the cleanup:



**Note:** if the scheduled time has come but **AVS Registry Cleaner** is unloaded, you will see the "Clean on Schedule" notification in the system tray and cleanup will start automatically.

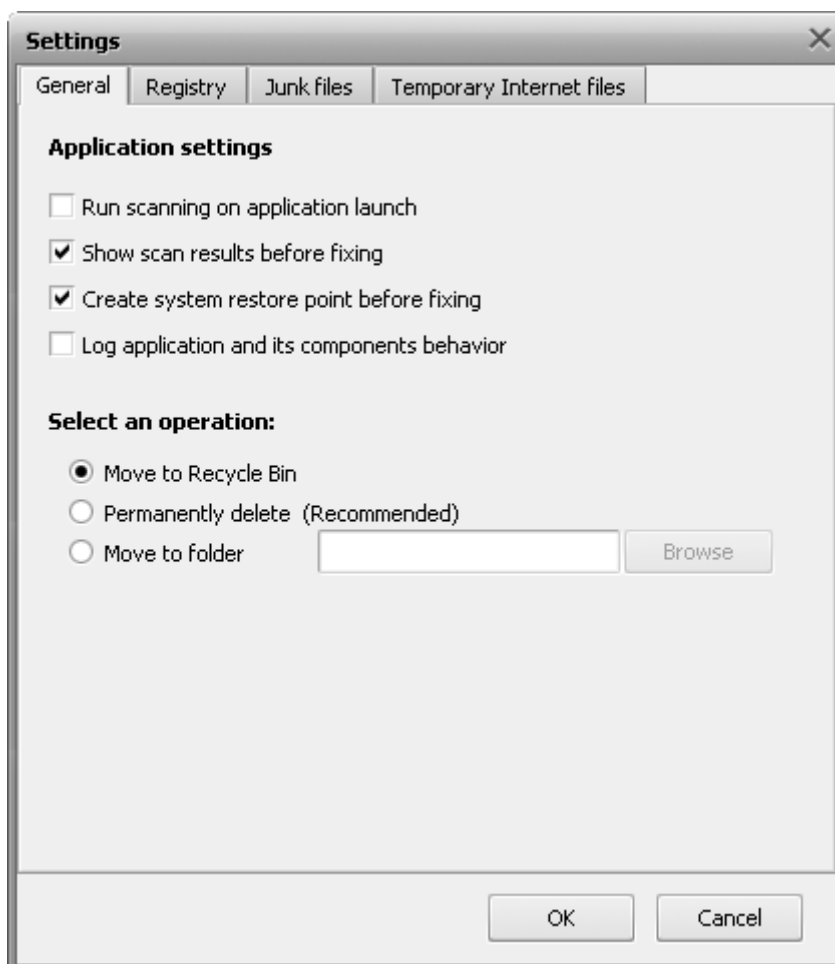


# Changing the Program Settings



To change the default program settings, click the **Settings** button on the **Menu Pane**.

## The General tab



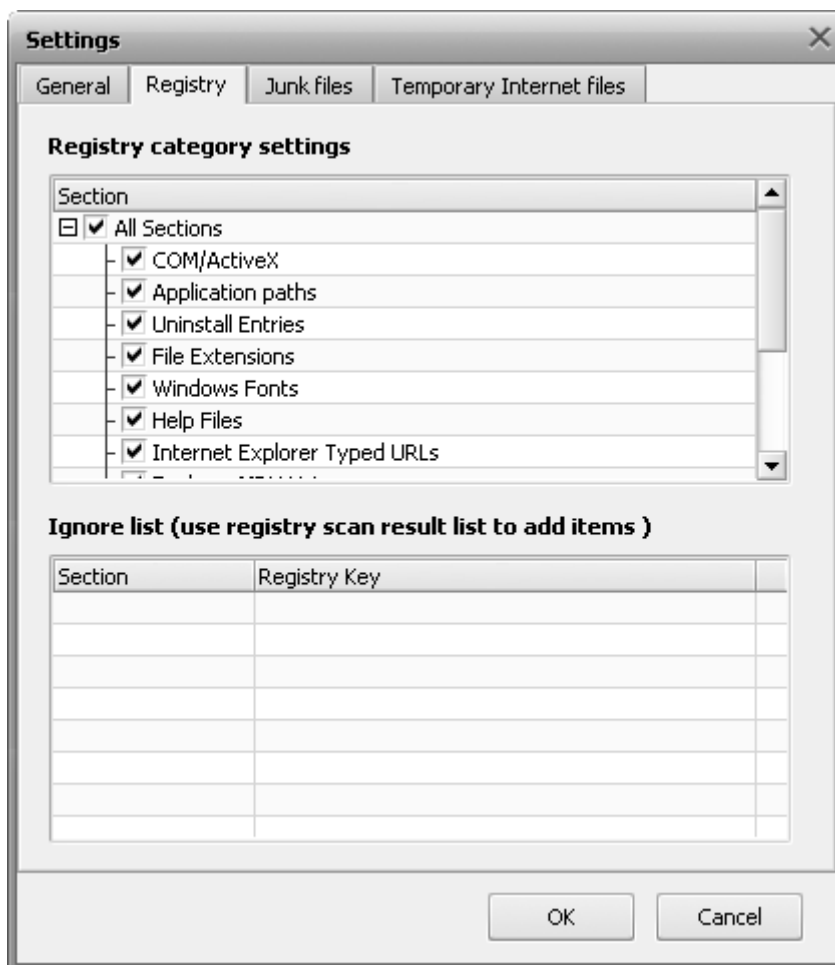
### Application settings

- **Run scanning on application launch** - use this option to perform the scanning automatically each time **AVS Registry Cleaner** is loaded.
- **Show scan results before fixing** - use this option to avoid the auto fixing of the found problems and see the results of scanning to have the opportunity to choose which problems exactly should be fixed.
- **Create system restore point before fixing** - use this option to create a system restore point each time before fixing is performed.
- **Log application and its components behavior** - use this option to journalize the **AVS Registry Cleaner** internal mechanism behavior including the work of its components. Sending such reports to us helps make the future releases of **AVS Registry Cleaner** even much better.

**Select an operation** - use this option to choose what should be done with the found temporary internet/junk files and broken shortcuts:

- **Move to Recycle Bin**
- **Permanently delete**
- **Move to folder**

## The Registry tab



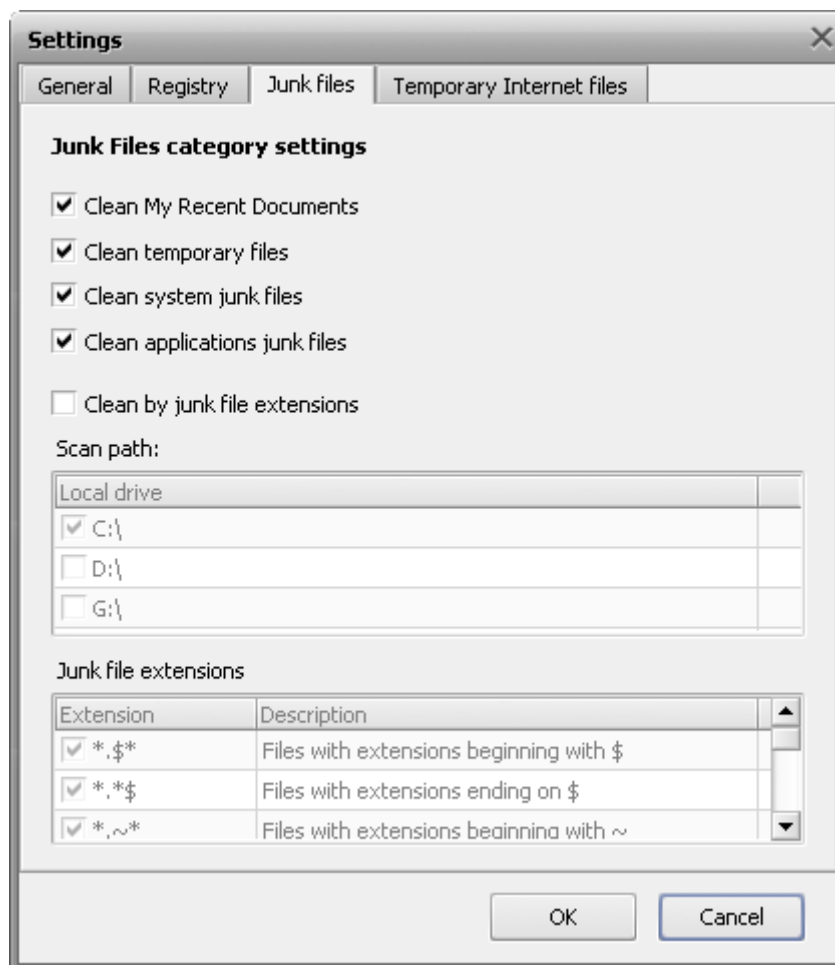
**Registry category settings** - use this option to choose which registry sections will be included into the scanning.

**Ignore list** - use this option to define which registry keys will be excluded from scanning. It is useful when you consider that a found problem does not have an effect on your system that much and want to decrease the general scan time. To delete a key or all the keys from the **Ignore List** use the right-click menu.



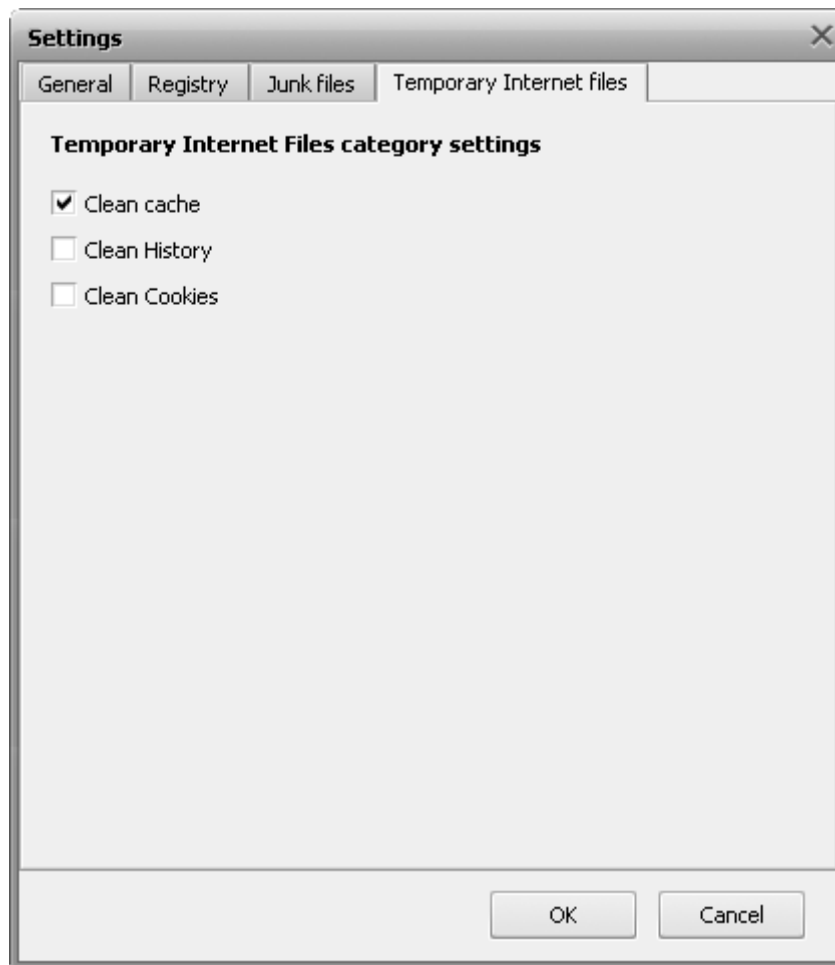
**Note:** to add the registry keys to the ignore list, scan the registry for problems first then click the **details** link to see the found problems and use the right-click menu **Add to Ignore List** item for a selected key.

## The Junk files tab



- **Clean My Recent Documents** - use this option to scan for the recently used items.
- **Clean temporary files** - use this option to scan for temporary files on system hard drive.
- **Clean system junk files** - use this option to scan for junk files in Windows system folder.
- **Clean applications junk files** - use this option to scan for some applications junk files (such as Adobe Flash Player, Adobe Acrobat, Oracle Java, Windows Media Player, Quick Time Player, and Microsoft Terminal Server Client in case they are installed on your computer).
- **Clean by junk file extensions** - use this option to enable the list of extensions to scan for junk files by them.
  - **Scan path** - use this option to define on which local hard drives to scan for junk files by extension.
  - **Junk file extensions** - the list of available junk file extensions.

## The Temporary Internet files tab



- **Clean cache** - use this option to scan for the Internet Explorer browser cache data.
- **Clean History** - use this option to scan for the Internet Explorer browser history data.
- **Clean Cookies** - use this option to scan for the Internet Explorer browser cookies data.