

AVS4YOU Programs Help



AVS Video to PSP

www.avs4you.com

© Online Media Technologies, Ltd., UK. 2004 - 2009 All rights reserved

Contact Us

If you have any comments, suggestions or questions regarding **AVS4YOU** programs or if you have a new feature that you feel can be added to improve our product, please feel free to contact us.

When you register your product, you may be entitled to technical support.

General information:	info@avs4you.com
Technical support:	support@avs4you.com
Sales:	sales@avs4you.com
Help and other documentation:	help@avs4you.com

Technical Support

AVS4YOU programs do not require any professional knowledge. If you experience any problem or have a question, please refer to the **AVS4YOU Programs Help**. If you cannot find the solution, please contact our support staff.

 **Note:** only registered users receive technical support.

AVS4YOU staff provides several forms of automated customer support:

- **AVS4YOU Support System**
You can use the **Support Form** on our site to ask your questions.
- **E-mail Support**
You can also submit your technical questions and problems via e-mail to support@avs4you.com.

 **Note:** for more effective and quick resolving of the difficulties we will need the following information:

- Name and e-mail address used for registration
- System parameters (CPU, hard drive space available, etc.)
- Operating System
- The information about the capture, video or audio devices, disc drives connected to your computer (manufacturer and model)
- Detailed step by step describing of your action

Please do **NOT** attach any other files to your e-mail message unless specifically requested by AVS4YOU.com support staff.

Resources

Documentation for your AVS4YOU software is available in a variety of formats:

In-product (.chm-file) and Online Help

To reduce the size of the downloaded software installation files the in-product help was excluded from the installation although you can always download it from our web-site for your convenience. Please, visit AVS4YOU web-site at <http://www.avs4you.com/OnlineHelp/index.aspx> to download the latest available version of the help executable, run it and install into the AVS4YOU programs folder. After that you will be able to use it through the **Help** menu of the installed AVS4YOU software.

Online Help include all the content from the In-product help file and updates and links to additional instructional content available on the web. You can find the **Online Help** at our web-site - <http://www.avs4you.com/OnlineHelp/index.aspx>. Please note, that the most complete and up-to-date version of AVS4YOU programs help is always on the web.

PDF Documentation

The offline help is also available as a pdf-file that is optimized for printing. All PDF help files are available for download at the programs pages at AVS4YOU web-site (both <http://www.avs4you.com/index.aspx> and <http://www.avs4you.com/OnlineHelp/index.aspx>). To be able to read and print AVS4YOU PDF help files you will need to have a PDF reading program installed.

User Guides

You have access to a wide variety of resources that help you make the most of your AVS4YOU software. The step-by-step user guides will be of help not only to the novice users but also to the users that face a certain task to be performed and look for a way to do it. Please, visit our **User Guides** section of AVS4YOU web-site at <http://www.avs4you.com/Guides/index.aspx> to read the detailed instructions for various software and tasks

Technical Support

Visit the **AVS4YOU Support** web-site at <http://support.avs4you.com> to ask your questions concerning AVS4YOU software installation, registration and use. Feel free to also use our e-mail address support@avs4you.com.

Downloads

Visit the **Downloads** section - <http://www.avs4you.com/downloads.aspx> - of our web-site to find free updates, tryouts, and other useful software. We constantly update the software, new versions of the most popular programs and new software are also frequently released.

Overview

AVS Video to PSP is a wizard-styled application and a powerful tool, which allows you to convert your favorite video files and DVD movies and transfer them directly to Sony PSP. No additional application is needed.

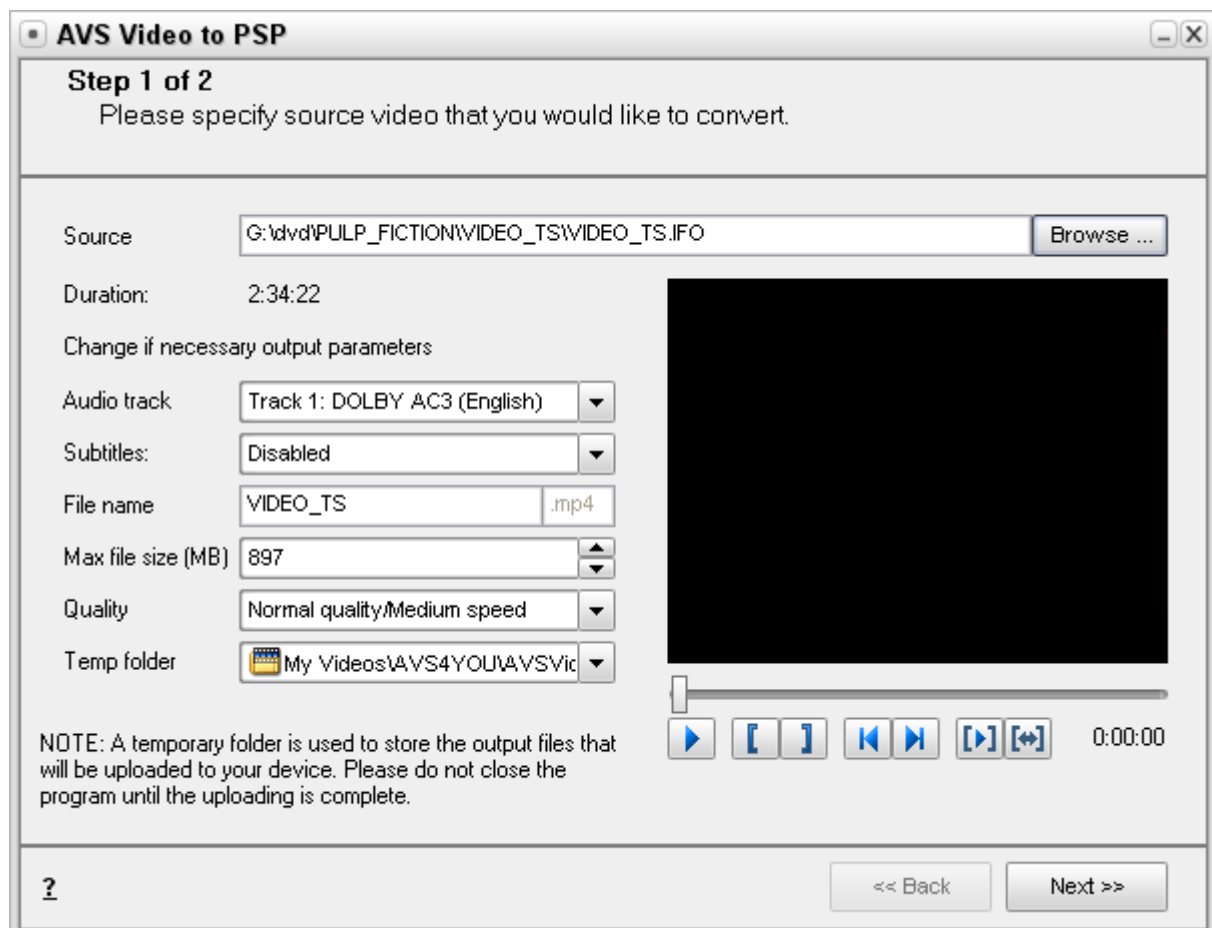
You can use **AVS Video to PSP** to do the following:

- copy DVDs quality lossless to a Sony PSP with a button touch;
- convert various video files for PSP - all today's key formats are supported;
- upload videos directly to the portable without any additional application;
- copy the entire movie or just a part of it. Cut out unnecessary parts of video and complete the conversion process.

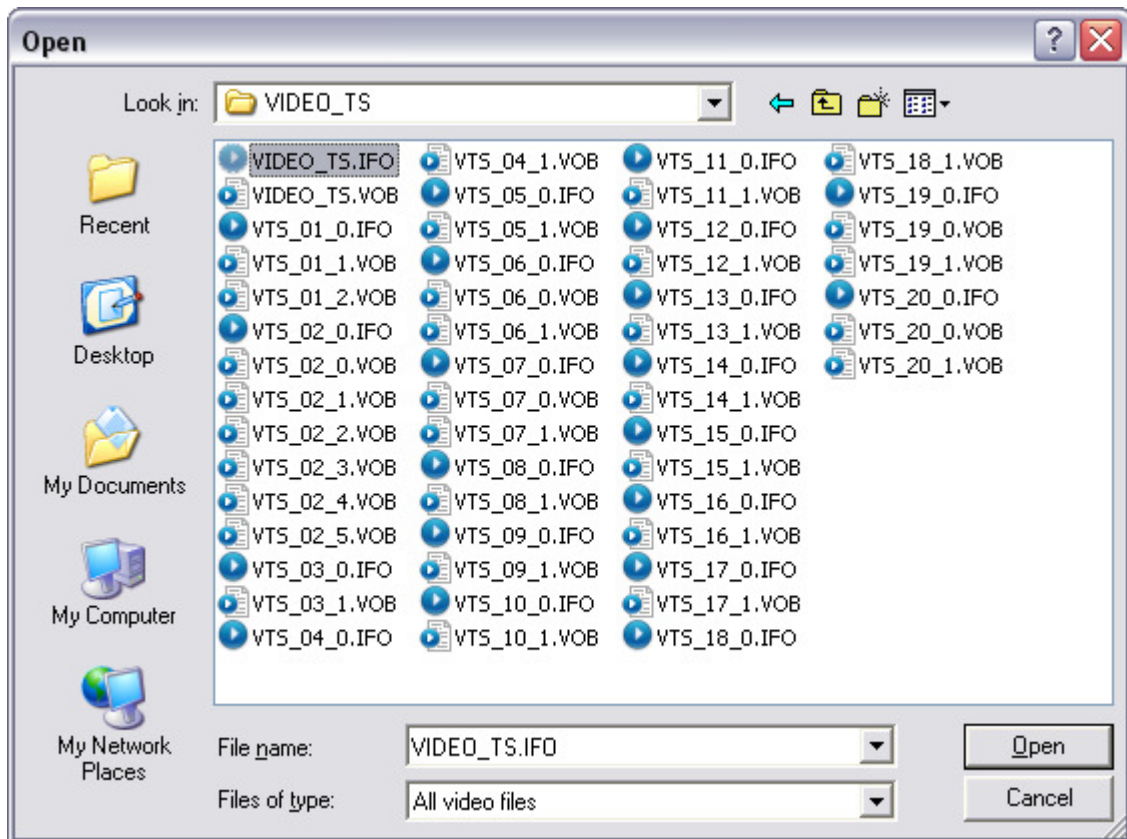
To start **Step one** go to your computer's **Start** menu and choose **All Programs -> AVS4YOU -> Mobiles -> AVS Video to PSP**.

Step 1: Choosing Source Video

First you need to select a video to convert: DVD video or other video file.



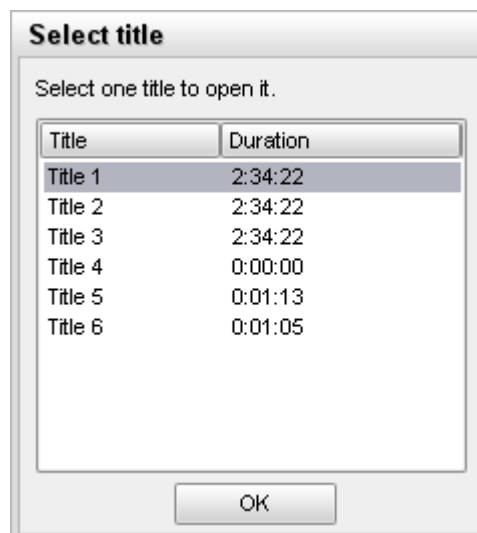
To do that click the **Browse...** button. The following window will let you select the video you need:



You should select the necessary file with the mouse and click **Open**.

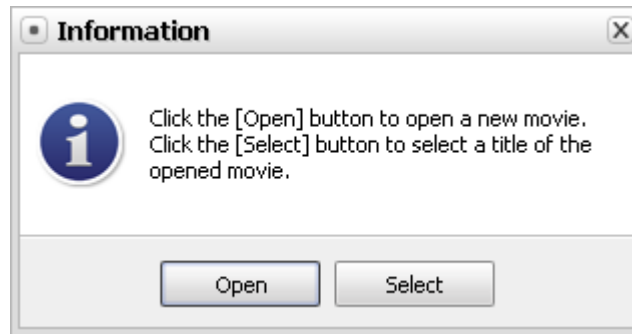
Note: when you select a DVD as an input video, you should choose the first **IFO** file in the DVD folder. It is done for the program to be able to load the whole DVD structure correctly.

After the **Open** button is pressed the video will be loaded into the program. In case your loaded DVD contains several titles the following window will let you select the necessary title:



The longest title which usually contains the main movie is selected by default. If you need some other title, select it with the mouse and click the **OK** button.

Note: if you open the wrong title, click the **Browse...** button again and in the opened dialog window



click the **Select** button to choose another title from the same movie, or use the **Open** button to load another video into the program.

Press **Audio track** to select audio language (there can be several audio tracks in one DVD, you should select the one you want).

Once the source file path is entered you will be able to see and change the following information:




- **File name** - use this option to select the name for the output video file.

Note: you can only change the file name, the extension will always be **.mp4**, so that Sony PSP could handle the resulting video correctly.

- **Max file size (MB)** - use this option to set the size (measured in Megabytes) for the output video file.
- **Quality** - use this option to set the quality-conversion speed ratio from the available presets - **Best quality** (the movie will be converted with the best possible quality but the conversion process will take more time), **Normal quality/Medium speed** (the movie will be converted with normal quality and the conversion process will be a little faster - set by default) and **Maximal speed** (the movie will be converted at the highest speed possible for the chosen preset at the expense of the quality).
- **Temp folder** - use this option to set a temporary folder that will be used to store the output files that will be uploaded to your device.

Note: if you close the program before the uploading is finished, the file will be deleted and the uploading will be interrupted. So the program have to run to insure the successful uploading process.

You can also use the following controls to view the input video file:

	Use the Play button to play the source video file to preview it.
	Use the Pause button to pause the source video file while previewing it.
	Use the Slider to find a specific place in the movie while previewing it.







If you are sure that you want to convert the entire DVD movie or video file then simply press **Next>>** to go to **Step two**.

You can also select to convert a part of the video only if you need to. Usually it is better to try and see the result of so to speak "test conversion": when you choose a small part of a movie and convert it into the selected format. After that if you are satisfied with the output and made sure you can playback it on the chosen device you can convert the whole movie with the same settings or change the settings if you see something wrong. Partial conversion is also useful when you want to cut the scenes from the movie or select only a part of a movie, for instance a music video clip.

Use the mouse cursor on the slider to select a part of the video to be converted. Select the beginning of the video with the mouse cursor (it will turn into a double sided arrow), click it and, **without releasing**, drag to the place where you want the episode of your video to begin. The same way the episode end is selected:



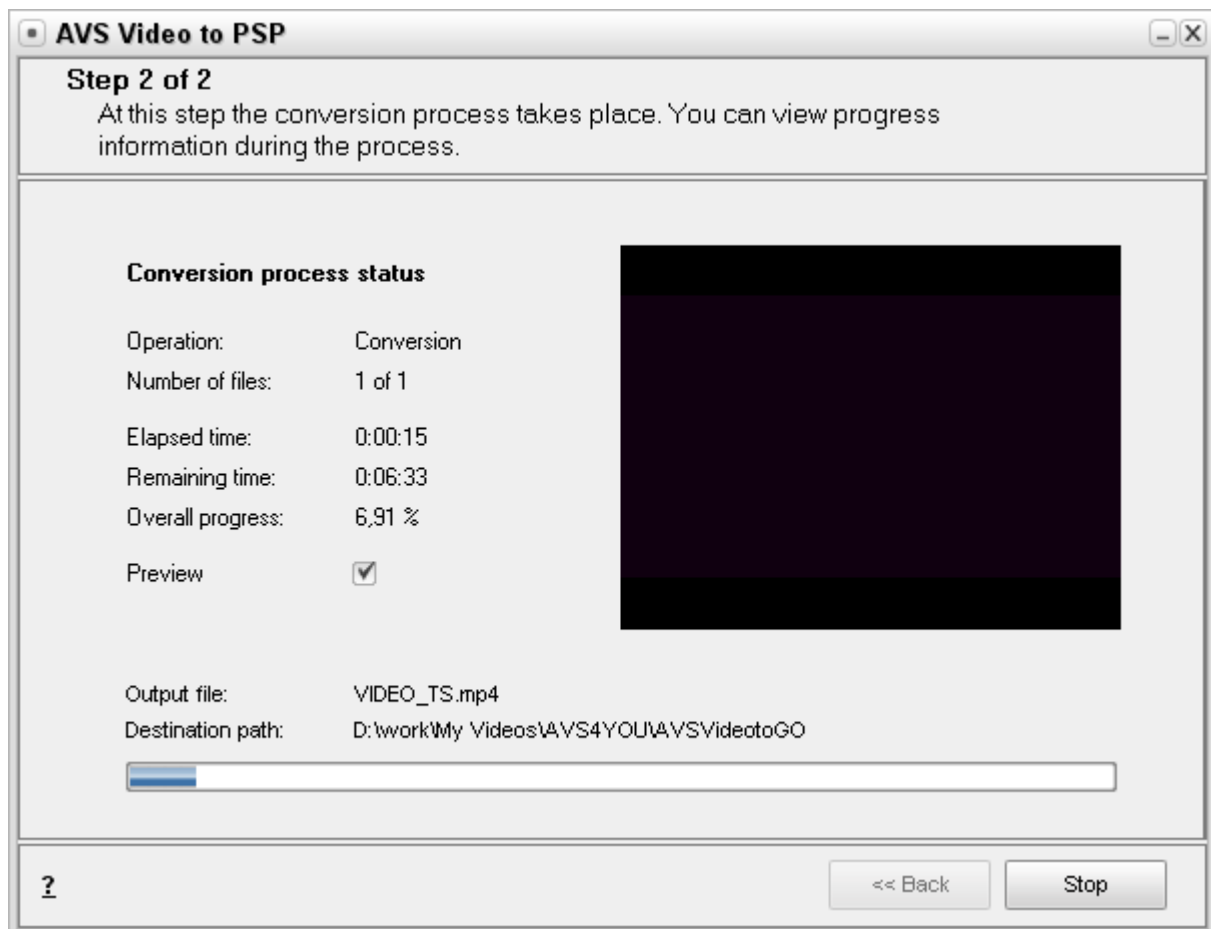
You can also use the buttons to make a selection:

	[F5]	Use the Set Selection Start from Cursor Position button to set the initial point of your selection to the current slider cursor position.
	[F6]	Use the Set Selection End to Cursor Position button to set the final point of your selection to the current slider cursor position.
	[F3]	Use the Show Selection Start button to show the video that corresponds to the selection initial point.
	[F4]	Use the Show Selection End button to show the video that corresponds to the selection final point.
		Use the Play Selection button to playback the video in the selection range.
		Use the Select All button in case you selected some part of your video and after that decided to convert the whole video.

When you are ready to proceed to the next step press the **Next>>** button to go to **Step two**.

Step 2: Conversion Progress

The second step is the longest in the conversion process. It takes up to several hours depending on different parameters: movie duration, CPU strength, etc. In this window you can choose to preview the conversion process marking the **Preview** box (it is marked by default).



You will see the **Overall progress** in percentage and on the progress bar:



The **Elapsed time** shows how much time has gone since the beginning of the conversion process and the **Remaining time** shows estimated time left till the conversion finishes.

You can press the **Stop** button to cancel the process.

After the conversion is over you will be offered to upload your file to your device.

Press the **Close** button to finish the work with **AVS Video to PSP**.

Sony PSP

Audio support

UMD:

- H.264/MPEG-4 AVC Main Profile Level 3
- Linear PCM
- ATRAC3plus

Memory Stick:

- ATRAC3plus
- MP3 (MPEG-1/2 Audio Layer 3)
- Linear PCM (WAV form)
- AAC (MP4 form)
- WMA

Video support

UMD:

- H.264/MPEG-4 AVC Main Profile Level 3

Memory Stick:

- MPEG-4 SP (MPEG-4 AAC)
- H.264/MPEG-4 AVC Main Profile (MPEG-4 AAC)

Photo support

Memory Stick:

- JPEG (Conforms with DCF 2.0/Exif 2.21)
- TIFF
- GIF
- PNG
- BMP